

8 7 6 5 4 3 2 1

D  
C  
B  
A

D  
C  
B  
A

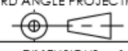
**CATALOG CODE**

**SC - X.X - XX**

TORQUE (Nm)
1.0
1.5
2.0
2.5
3.0
3.5
4.0

BORE (SHAFT INTERFACE) & STYLE
01 - 6mm CROSS PIN
02 - 6mm "D" SHAFT
03 - 8mm & 5/16IN CROSS PIN
04 - 8mm & 5/16IN "D" SHAFT



REELL PRECISION MANUFACTURING 1259 WILLOW LAKE BOULEVARD SAINT PAUL, MINNESOTA 55110-5103, USA	ECO NO: 02104	PART LIFECYCLE: RELEASED		
	APPROVED BY: HAZEL ANDERSON	DEVELOPMENT CYCLE: PRODUCTION		
	APPROVED DATE: 29 APR 20	DESCRIPTION:  <b>SALES DRAWING</b>		
	PROJECT NO: 0			
ENGINEER: MICHAEL BEALE	PART NO: SC		REV: N	
THIS PRINT IS THE CONFIDENTIAL PROPERTY OF REELL PRECISION MFG. INTERPRET PRINT PER ASME Y14.5M-2009	THIRD ANGLE PROJECTION  DIMENSIONS: [mm] IN	SCALE: 1:1	DO NOT SCALE DRAWING	SHEET 1 OF 2

SPECIFICATIONS SUBJECT TO CHANGE

8 7 6 5 4 3 2 1

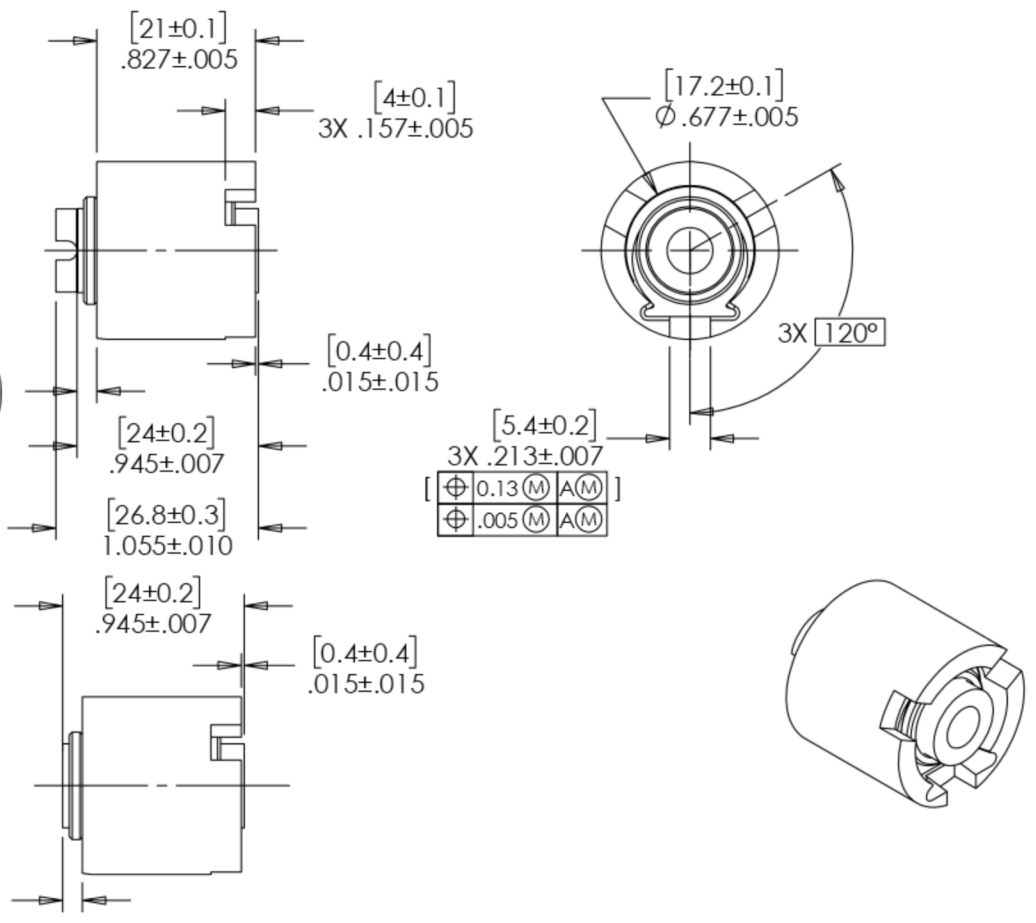
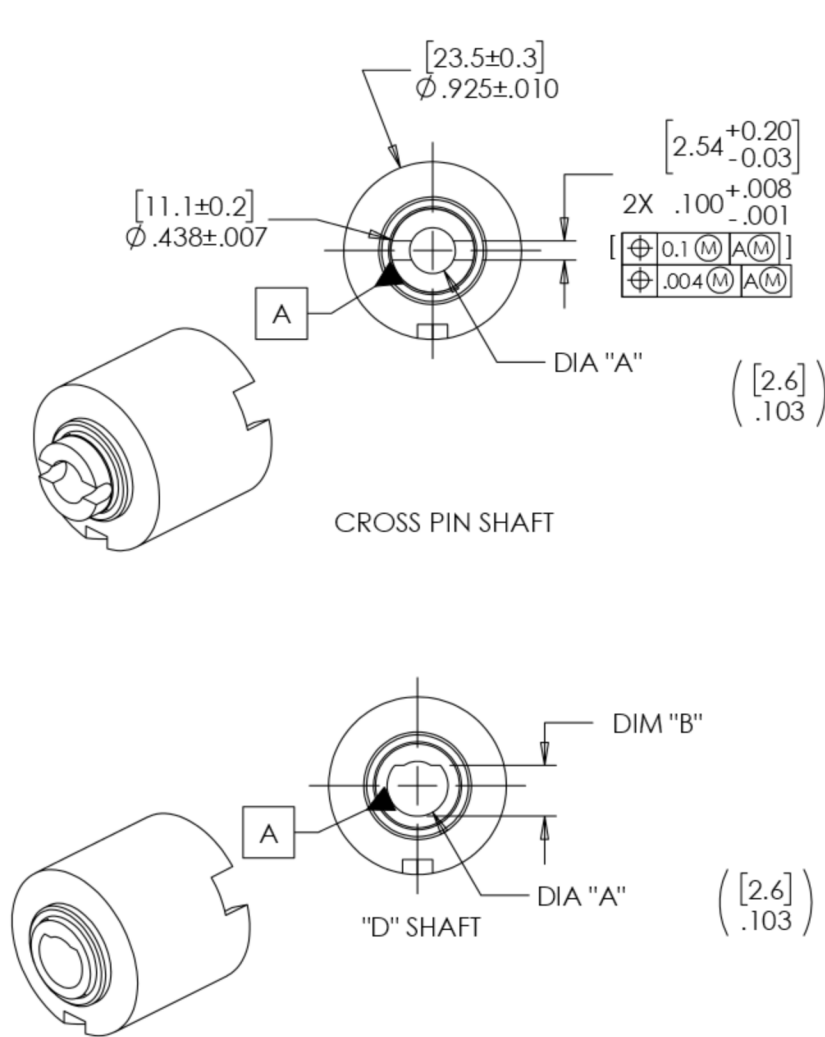
SHAFT NOM.	DIA. "A"	DIM. "B"	DYNAMIC TORQUES	
			1.0 ± 0.2 Nm	8.8 ± 1.76 Lb-in
6mm	[6.01/6.2]	[5.01/5.1]	1.5 ± 0.3 Nm	13.3 ± 2.66 Lb-in
			2.0 ± 0.4 Nm	17.7 ± 3.54 Lb-in
8mm & 5/16	[8.01/8.2] .3153/.3230	[6.64/6.74] .2614/.2654	2.5 ± 0.5 Nm	22.1 ± 4.42 Lb-in
			3.0 ± 0.6 Nm	26.6 ± 5.32 Lb-in
			3.5 ± 0.7 Nm	31.0 ± 6.20 Lb-in
			4.0 ± 0.8 Nm	35.4 ± 7.08 Lb-in

NOTES:

- LIFE: 30,000 CYCLES WHEN DUTY CYCLE IS LESS THAN 10% AND ROTATIONAL SPEED IS LESS THAN 40RPM. 30 SECONDS OF MAXIMUM CONTINUOUS ACTIVATION.
- STATIC TORQUE IS NORMALLY WITHIN 10% OF DYNAMIC TORQUE.

D  
C  
B  
A

D  
C  
B  
A



SPECIFICATIONS SUBJECT TO CHANGE

	ECCO NO: Q2104	PART LIFECYCLE: RELEASED
	APPROVED BY: HAZEL ANDERSON	DEVELOPMENT CYCLE: PRODUCTION
	APPROVED DATE: 29 APR 20	DESCRIPTION:
	PROJECT NO: 0	<b>SALES DRAWING</b>
REELL PRECISION MANUFACTURING 1259 WILLOW LAKE BOULEVARD SAINT PAUL, MINNESOTA 55110-5103, USA	ENGINEER: MICHAEL BEALE	PART NO: <b>SC</b>
THIS PRINT IS THE CONFIDENTIAL PROPERTY OF REELL PRECISION MFG.	DRAWN BY: HAZEL ANDERSON	
	INTERPRET PRINT PER ASME Y14.5M-2009	THIRD ANGLE PROJECTION 
	DIMENSIONS: [mm] IN	SHEET 2 OF 2

8 7 6 5 4 3 2 1