

CATALOG CODE


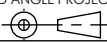
TI - 130 - X.X - XX

TORQUE N-m
- 1.0
- 1.5
- 2.0

FIN NO.
-01

NOTES:

- APPLICATION CONDITIONS REFERENCE (USER MUST DETERMINE FITNESS FOR USE IN APPLICATION).
ENVIRONMENT CONDITIONS: -20° TO +80°C
UP TO 10% OF LIFE CYCLES AT HOT AND COLD CONDITIONS.
- LIFE: 25,000 CYCLES.
ONE CYCLE CONSISTS OF 120° CW AND 120° CCW.
FIVE(5) CYCLES PER MINUTE MAX.
- MATERIAL:
BRACKET AND SHAFT END ARE ENGINEERED PLASTIC
SHAFT AND TORQUE ELEMENT ARE HARDENED STEEL
MINERAL OIL BASED LUBRICANT
- STATIC TORQUE IS NORMALLY WITHIN 10% OF DYNAMIC TORQUE.
- TABS ON HINGE TO BE ALIGNED AS SHOWN ±5°.

	ECO NO: 04168	PART LIFECYCLE: RELEASED		
	APPROVED BY: MATT GRAMSE	DEVELOPMENT CYCLE: PRODUCTION		
	APPROVED DATE: 02SEP21	DESCRIPTION: SALES DRAWING		
	PROJECT NO: 101281			
REELL PRECISION MANUFACTURING 1259 WILLOW LAKE BOULEVARD SAINT PAUL, MINNESOTA 55110-5103, USA	ENGINEER: MATT GRAMSE	PART NO: TI-130		
THIS PRINT IS THE CONFIDENTIAL PROPERTY OF REELL PRECISION MFG.	DRAWN BY: MATT GRAMSE			REV: A
INTERPRET PRINT PER ASME Y14.5M-2009	THIRD ANGLE PROJECTION 	DIMENSIONS: mm	SCALE: 1:1 DO NOT SCALE DRAWING	SHEET 1 OF 4

SPECIFICATION SUBJECT TO CHANGE

CATALOG CODE

DYNAMIC TORQUE

TI-130-1.0-01

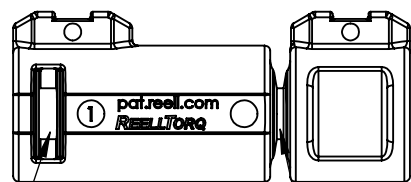
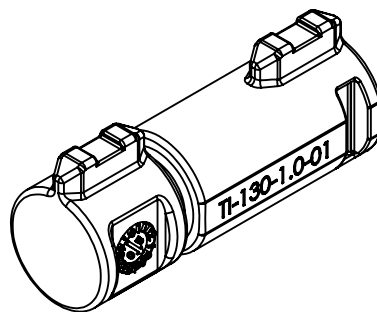
1.0 ± 0.3 Nm

TI-130-1.5-01

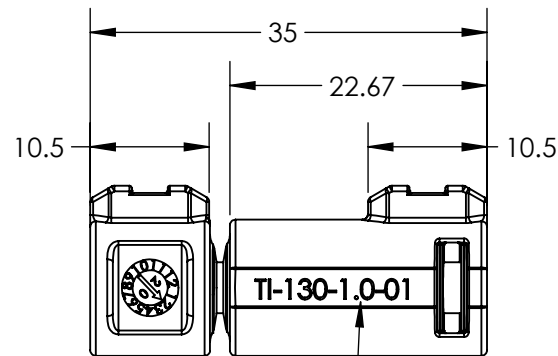
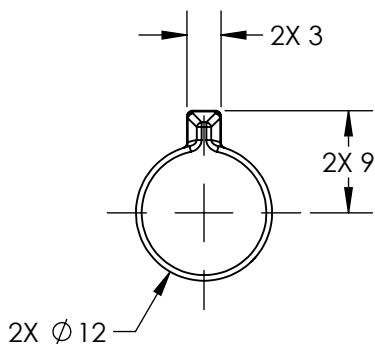
1.5 ± 0.4 Nm

TI-130-2.0-01

2.0 ± 0.4 Nm


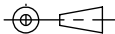


LUBRICANT MAY
APPEAR OVER LIFE IN
THESE LOCATIONS



CATALOG CODE

SPECIFICATION SUBJECT TO CHANGE

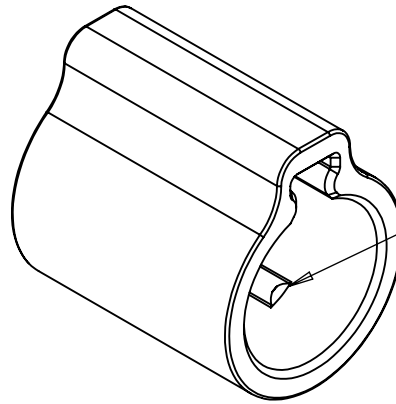
	ECO NO: 04168	PART LIFECYCLE: RELEASED					
	APPROVED BY: MATT GRAMSE	DEVELOPMENT CYCLE: PRODUCTION					
	APPROVED DATE: 02SEP21	DESCRIPTION:					
	PROJECT NO: 101281	SALES DRAWING					
REELL PRECISION MANUFACTURING 1259 WILLOW LAKE BOULEVARD SAINT PAUL, MINNESOTA 55110-5103, USA	ENGINEER: MATT GRAMSE	<table border="1" style="width: 100%;"> <tr> <td style="width: 60%;">PART NO:</td> <td style="width: 20%; text-align: center; font-size: 18pt;">TI-130</td> <td style="width: 20%;">REV:</td> <td style="width: 10%; text-align: center; font-size: 18pt;">A</td> </tr> </table>		PART NO:	TI-130	REV:	A
PART NO:	TI-130			REV:	A		
THIS PRINT IS THE CONFIDENTIAL PROPERTY OF REELL PRECISION MFG.	DRAWN BY: MATT GRAMSE						
INTERPRET PRINT PER ASME Y14.5M-2009	THIRD ANGLE PROJECTION 	DIMENSIONS: mm	SCALE: 1.5:1	DO NOT SCALE DRAWING	SHEET 2 OF 4		

TI-130-X.X-01

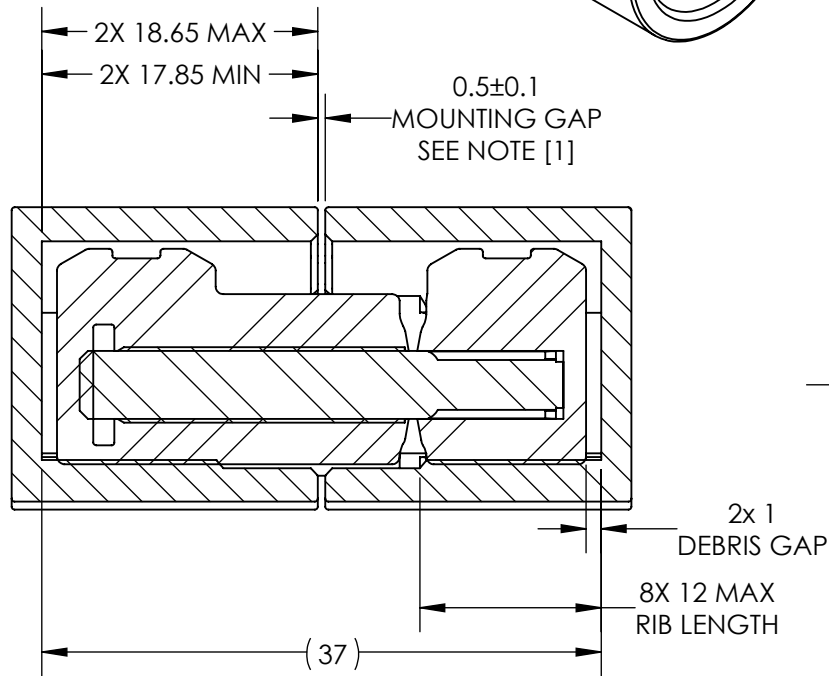
MOUNTING RECOMMENDATION

NOTES:

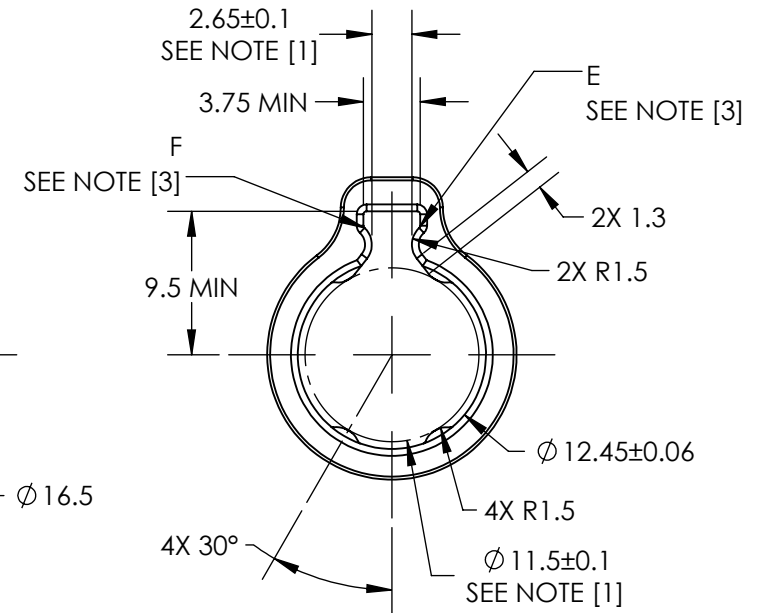
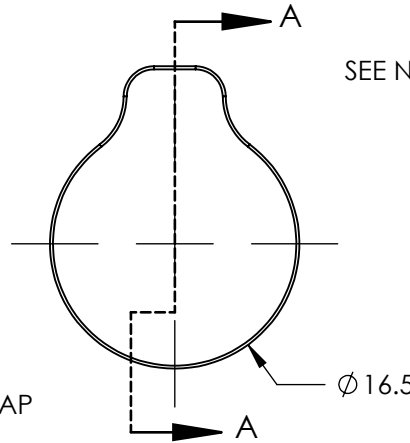
- [1] DOUBLE THE NEGATIVE TOLERANCE WHEN PRESSING INTO PLASTIC.
- [2] LOCATE MOUNTING GAP OVER HINGE BODY FOR ADDITIONAL SUPPORT.
- [3] GEOMETRY BETWEEN POINTS E & F CCW MAY VARY IF DESIRED (CUTTER RELIEF).



USE LEAD IN CHAMFER ON RIBS TO AVOID EXCESSIVE SHEARING.



SECTION A-A
SCALE 2 : 1



SPECIFICATION SUBJECT TO CHANGE

	ECO NO: 04168	PART LIFECYCLE: RELEASED
	APPROVED BY: MATT GRAMSE	DEVELOPMENT CYCLE: PRODUCTION
	APPROVED DATE: 02SEP21	DESCRIPTION:
	PROJECT NO: 101281	SALES DRAWING
REELL PRECISION MANUFACTURING 1259 WILLOW LAKE BOULEVARD SAINT PAUL, MINNESOTA 55110-5103, USA	ENGINEER: MATT GRAMSE	PART NO: TI-130
THIS PRINT IS THE CONFIDENTIAL PROPERTY OF REELL PRECISION MFG.	DRAWN BY: MATT GRAMSE	
INTERPRET PRINT PER ASME Y14.5M-2009	THIRD ANGLE PROJECTION 	SCALE: 1:1
	DIMENSIONS: mm	DO NOT SCALE DRAWING
		SHEET 3 OF 4

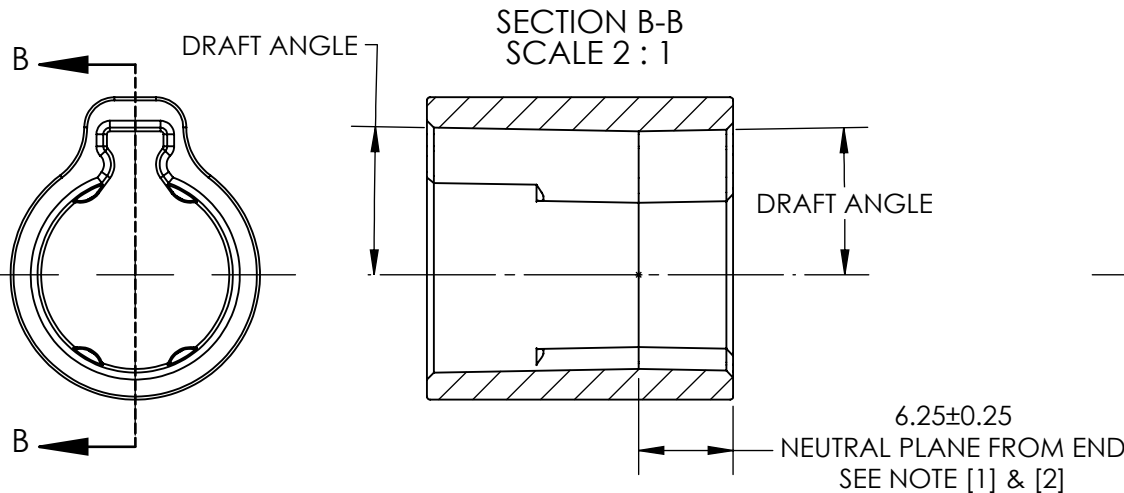
TI-130-X.X-01

MOUNTING RECOMMENDATION WITH DRAFT

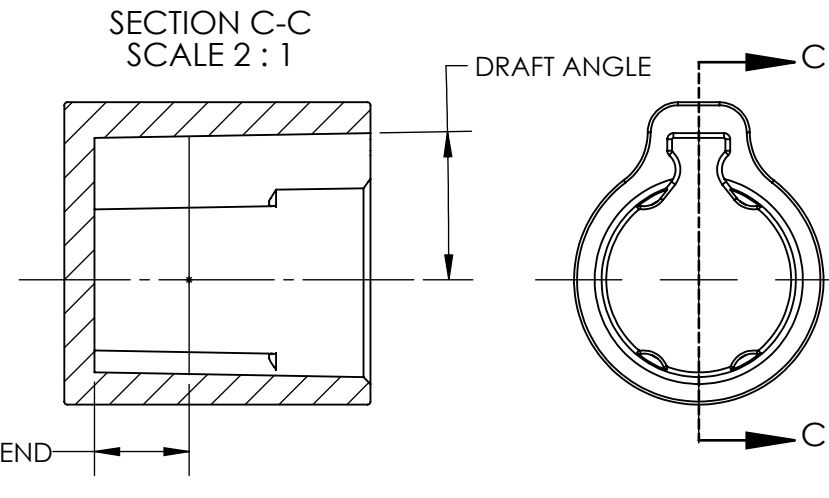
NOTES:

- [1] WHEN DRAFT ANGLE IS $\geq 1^\circ$:
ADD 0.1 mm OF INTERFERENCE OVER THE TAB, FROM 2.65 NOM. TO 2.55 NOM. TO GUARANTEE CONTACT OVER FULL LENGTH OF THE TAB
- [2] NEUTRAL PLANE INDICATES THE PLANE OF NOMINAL INTERFERENCE RECOMMENDED ON PREVIOUS PAGE.
- 3. LARGE DRAFT ANGLES WILL REDUCE RADIAL LOAD SUPPORT.


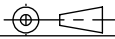
DOUBLE PULL DRAFTS



SINGLE PULL DRAFTS



SPECIFICATION SUBJECT TO CHANGE

	ECO NO: 04168	PART LIFECYCLE: RELEASED
	APPROVED BY: MATT GRAMSE	DEVELOPMENT CYCLE: PRODUCTION
	APPROVED DATE: 02SEP21	DESCRIPTION:
	PROJECT NO: 101281	SALES DRAWING
REELL PRECISION MANUFACTURING 1259 WILLOW LAKE BOULEVARD SAINT PAUL, MINNESOTA 55110-5103, USA	ENGINEER: MATT GRAMSE	PART NO: TI-130
THIS PRINT IS THE CONFIDENTIAL PROPERTY OF REELL PRECISION MFG.	DRAWN BY: MATT GRAMSE	
INTERPRET PRINT PER ASME Y14.5M-2009	THIRD ANGLE PROJECTION 	SCALE: 1:1
	DIMENSIONS: mm	DO NOT SCALE DRAWING
		SHEET 4 OF 4