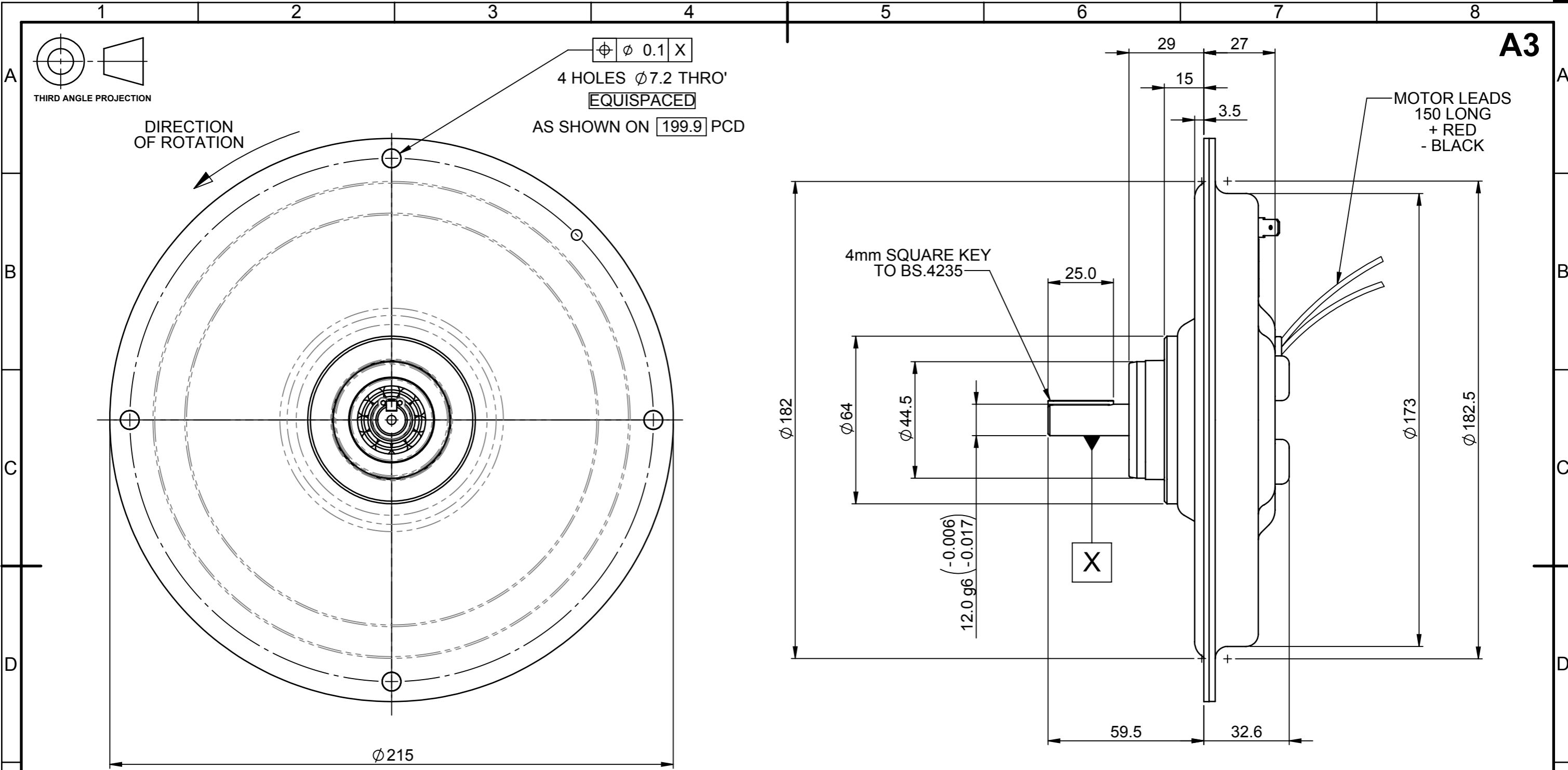


© PRINTED MOTOR WORKS LIMITED
 THIS DRAWING, ENGINEERING REPORT OR DOCUMENT IS COPYRIGHT AND PROPERTY IS RESERVED THEREIN AND THE INFORMATION CONTAINED THEREIN IS CONFIDENTIAL. THIS DRAWING, ENGINEERING REPORT OR DOCUMENT AND INFORMATION MAY NOT BE REPRODUCED OR COMMUNICATED TO A THIRD PARTY OR USED FOR ANY PURPOSE OTHER THAN THAT FOR WHICH IS SUPPLIED WITHOUT THE PRIOR WRITTEN CONSENT OF THE COMPANY.



A3

MOTOR RATINGS.

VOLTAGE.....	75.8 VDC
CURRENT.....	8.4 Amps
TORQUE.....	170 Ncm
SPEED.....	3000 r.p.m
POWER.....	533 Watts

MOTOR CONSTANTS.

VOLTAGE.....	Ke	22.9 V/1000 r.p.m
TORQUE.....	Kt	21.9 Ncm/ Amp
DAMPING.....	Kd	2.5 Ncm / 1000 r.p.m
FRICTION.....	Tf	4.9 Ncm
TERMINAL RESISTANCE.....		0.85 Ohm

NOTES:

- ELECTRICAL SPEC. No.111

GENERAL ASSEMBLY DETAILS
SEE DRG. 539634

LAST CHANGE DETAIL ▲				PART MARKING INDELIBLY MARK ON PART No. WHERE MARKED		TOLERANCES UNLESS STATED		DIMENSIONS mm		UNLESS OTHERWISE STATED CHAMFER OR RADII 0.13 (0.005") MAX. REMOVE BURRS & SHARP EDGES. DIMENSIONS APPLY AFTER PLATING		PRINTED MOTOR WORKS Ltd, ALTON, HAMPSHIRE. GU34 2QW. UK	
ISS.	DATE	CR No.	ZONE	INITIALS	DRAWN BY G. BELL	DATE 08/12/2009	0. ± 0.4	ESTIMATED MASS 3274.10	MATERIAL N/A	TITLE CUSTOMER OUTLINE DRG. GPN16			
06	29/10/2015	CR4707		GB	CHECKED BY RB	DATE 08/12/2009	0.0 ± 0.1						
05	19/04/2010	CR3296		GB	APPROVED BY	DATE	0.00 ± 0.05	SCALE 1:1.5	FINISH N/A	DRAWING NUMBER 005061		SHEET 1 OF 1	
							ANGULAR ± 0.5°						DO NOT SCALE. IF IN DOUBT ASK. BS 8888
							SURFACE FINISH 1.6/▽			DRAWING NUMBER 005061			