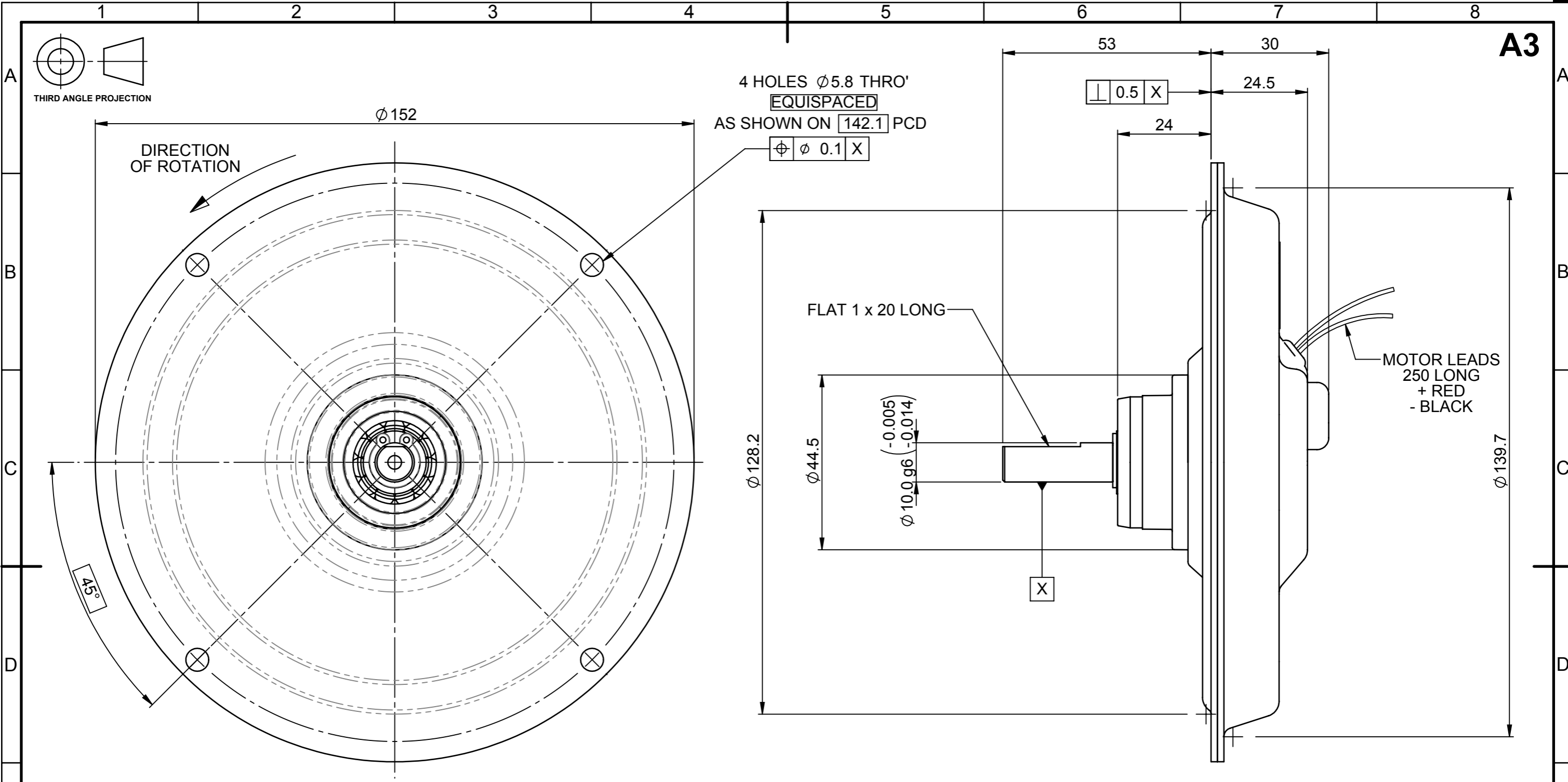


© PRINTED MOTOR WORKS LIMITED
 THIS DRAWING, ENGINEERING REPORT OR DOCUMENT IS COPYRIGHT AND PROPERTY IS RESERVED THEREIN AND THE INFORMATION CONTAINED THEREIN IS CONFIDENTIAL. THIS DRAWING, ENGINEERING REPORT OR DOCUMENT AND INFORMATION MAY NOT BE REPRODUCED OR COMMUNICATED TO A THIRD PARTY OR USED FOR ANY PURPOSE OTHER THAN THAT FOR WHICH IS SUPPLIED WITHOUT THE PRIOR WRITTEN CONSENT OF THE COMPANY.



MOTOR RATINGS.

VOLTAGE.....37.5 Vdc
 CURRENT.....7.3 Amps
 TORQUE.....64.0 Ncm
 SPEED.....3000 r.p.m
 POWER.....200 Watts

MOTOR CONSTANTS.

VOLTAGE.....Ke 10.1 V/1000 r.p.m
 TORQUE.....Kt 9.6 Ncm/ Amp
 DAMPING.....Kd 1.2 Ncm / 1000 r.p.m
 FRICTION.....Tf 2.0 Ncm
 TERMINAL RESISTANCE.....1.0 Ohm

NOTES:

1. BEARING COVER 461316 IS AVAILABLE AS AN OPTIONAL EXTRA.
2. MAX SHAFT ENDFLOAT 0.125mm
3. ELECTRICAL SPEC. No. 109

GENERAL ASSEMBLY DETAILS
 SEE DRG. 539619

LAST CHANGE DETAIL ▲				KEY CHARACTERISTICS IDENTIFIED BY THE FOLLOWING SYMBOL ☒		TOLERANCES UNLESS STATED		DIMENSIONS mm		UNLESS OTHERWISE STATED CHAMFER OR RADII 0.13 (0.005") MAX. REMOVE BURRS & SHARP EDGES. DIMENSIONS APPLY AFTER PLATING		PRINTED MOTOR WORKS Ltd, ALTON, HAMPSHIRE. GU34 2QW. UK	
ISS.	DATE	CR No.	ZONE	INITIALS	DRAWN BY G. BELL	DATE 28/10/2009	0. ± 0.4 0.0 ± 0.1 0.00 ± 0.05 ANGULAR ± 0.5°	ESTIMATED MASS 1113.06	MATERIAL N/A		TITLE CUSTOMER OUTLINE DRAWING GPN12		
05	01/09/2010	CR3451		GB	CHECKED BY RB	DATE 28/10/2009	SURFACE FINISH 1.6/▽	SCALE 1:1	FINISH N/A		DO NOT SCALE. IF IN DOUBT ASK. BS 8888	DRAWING NUMBER 005062	SHEET 1 OF 1
04	15/04/2010	CR3283		GB									

A3