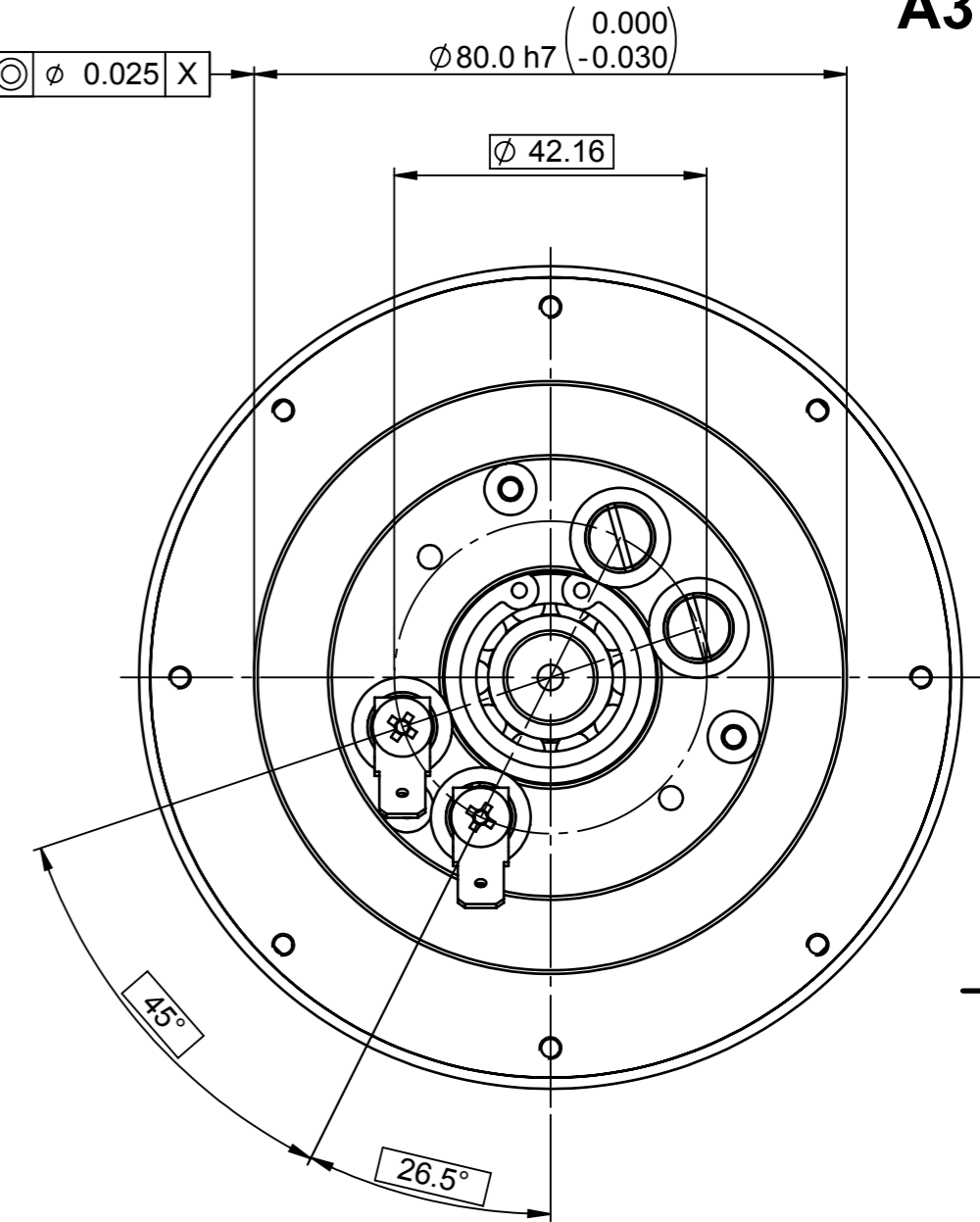
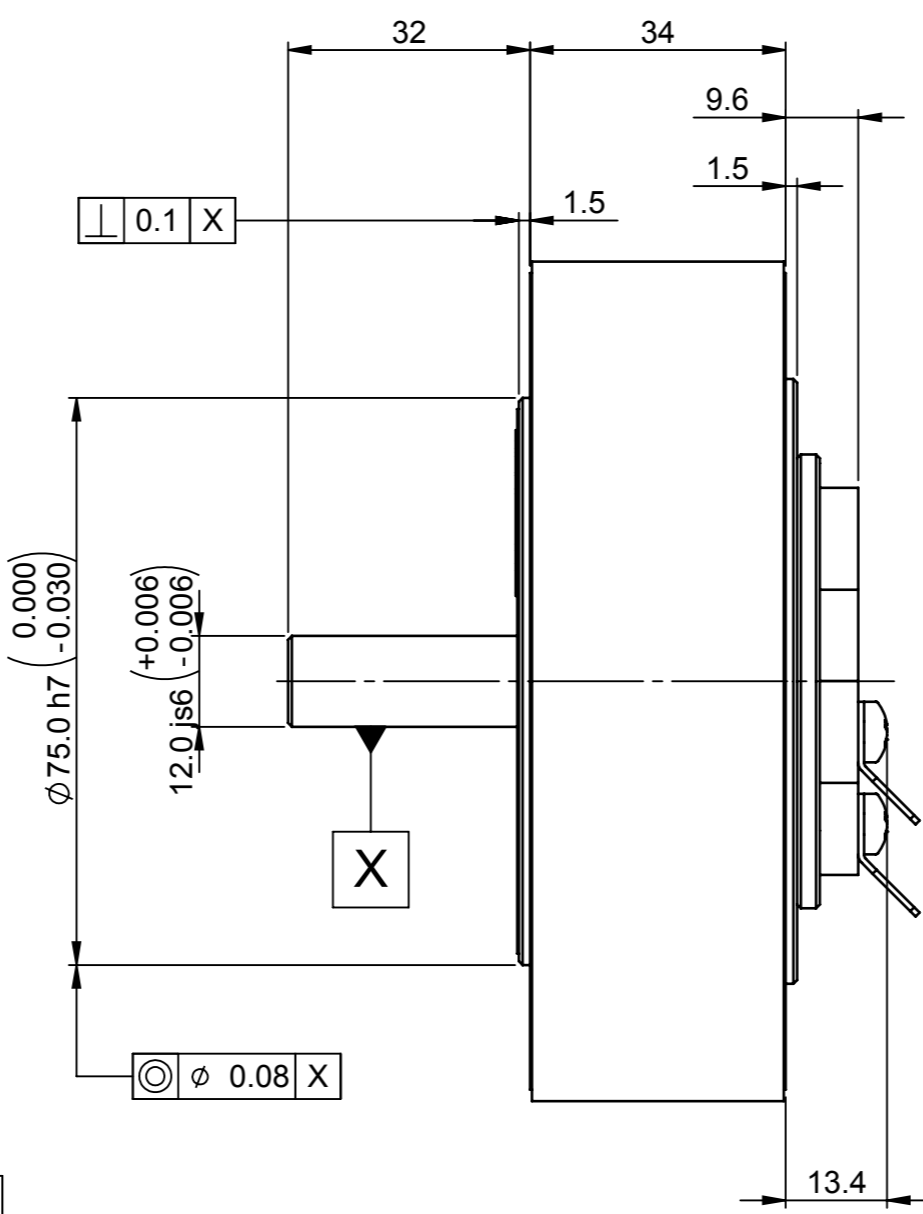
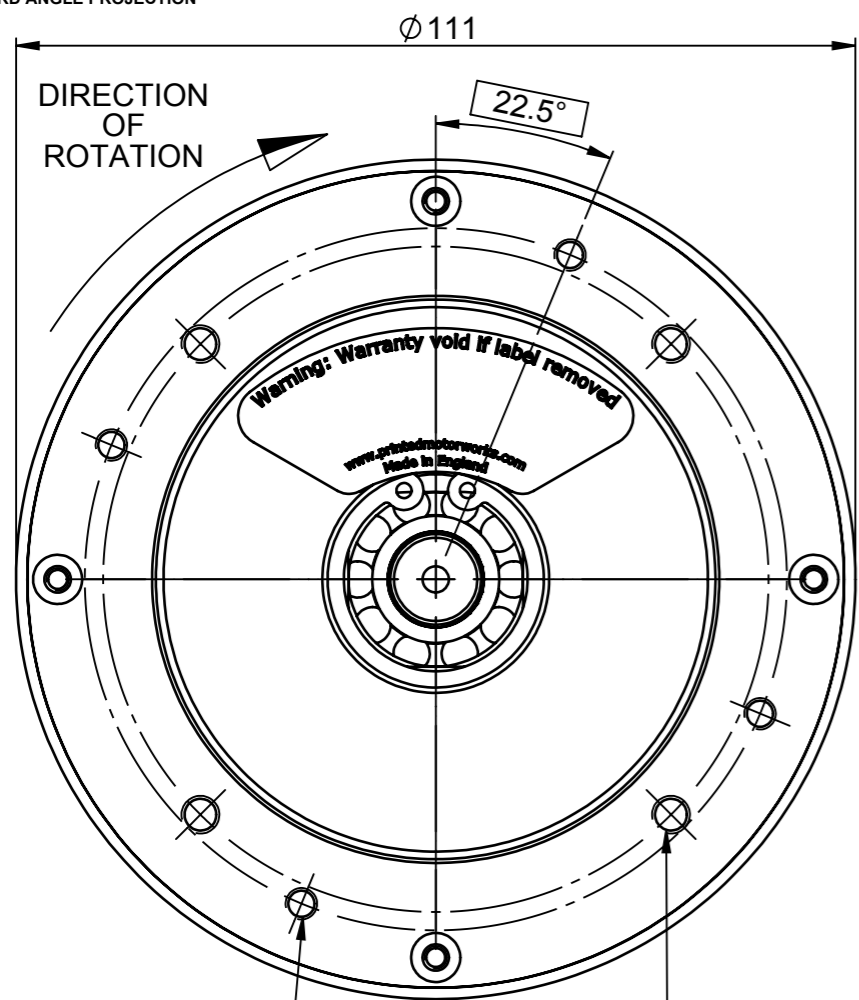
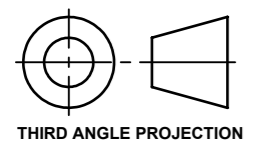


© PRINTED MOTOR WORKS LIMITED  
 THIS DRAWING, ENGINEERING REPORT OR DOCUMENT IS COPYRIGHT AND PROPERTY IS RESERVED THEREIN AND THE INFORMATION CONTAINED THEREIN IS CONFIDENTIAL. THIS DRAWING, ENGINEERING REPORT OR DOCUMENT AND INFORMATION MAY NOT BE REPRODUCED OR COMMUNICATED TO A THIRD PARTY OR USED FOR ANY PURPOSE OTHER THAN THAT FOR WHICH IS SUPPLIED WITHOUT THE PRIOR WRITTEN CONSENT OF THE COMPANY.

**A3**



$\phi$  0.15 X  
 4 HOLES 8 - 32 UNC 2B  
 6 MIN FULL THREAD  
 EQUISPACED  
 ON 92.85 PCD

$\phi$  0.15 X  
 4 HOLES M5 x 0.8-6H  
 6 MIN FULL THREAD  
 MUST NOT BREAK THRO'  
 EQUISPACED  
 ON 88.0 PCD

**MOTOR RATINGS.**

VOLTAGE..... 30 VDC  
 CURRENT..... 7.9 Amps  
 TORQUE..... 49 Ncm  
 SPEED..... 3000 r.p.m  
 POWER..... 154 Watts

**MOTOR CONSTANTS.**

VOLTAGE.....Ke 7.6 V/1000 r.p.m  
 TORQUE.....Kt 7.3 Ncm/ Amp  
 DAMPING.....Kd 0.78 Ncm / 1000 r.p.m  
 FRICTION.....Tf 2.8 Ncm  
 TERMINAL RESISTANCE.....0.85 Ohm

**NOTES:**

- ELECTRICAL SPEC. No.097
- MAX RADIAL LOAD AT RATED SPEED 105N

**GENERAL ASSEMBLY DETAILS**  
 SEE DRG. 539868

LAST CHANGE DETAIL $\triangle$					PART MARKING INDELIBLY MARK ON PART No. WHERE MARKED		TOLERANCES UNLESS STATED		DIMENSIONS mm		UNLESS OTHERWISE STATED CHAMFER OR RADII 0.13 (0.005") MAX. REMOVE BURRS & SHARP EDGES. DIMENSIONS APPLY AFTER PLATING		PRINTED MOTOR WORKS Ltd, ALTON, HAMPSHIRE. GU34 2QW. UK		
ISS.	DATE	CR No.	ZONE	INITIALS	DRAWN BY G. BELL	DATE 10/12/2010	0. ± 0.4	0.0 ± 0.1	ESTIMATED MASS 1717.49	MATERIAL N/A	TITLE CUSTOMER OUTLINE DRAWING GN9 STD				
03	18/01/2012	CR3899		GB	CHECKED BY RB	DATE 10/12/2010	0.00 ± 0.05	ANGULAR ± 0.5°							
02	22/11/2011	CR3847		GB	APPROVED BY	DATE	SURFACE FINISH 1.6/ $\nabla$		SCALE 1:1	FINISH N/A	DO NOT SCALE. IF IN DOUBT ASK. BS 8888	DRAWING NUMBER <b>002419</b>	SHEET 1 OF 1		
01	17/01/2011			GB											