

- NOTES: DIMENSIONS OTHERWISE SPECIFIED)  
 1. ALL DIMENSIONS APPLY AFTER PLATING.  
 2. BREAK ALL SHARP EDGES AND  
 REMOVE BURRS.

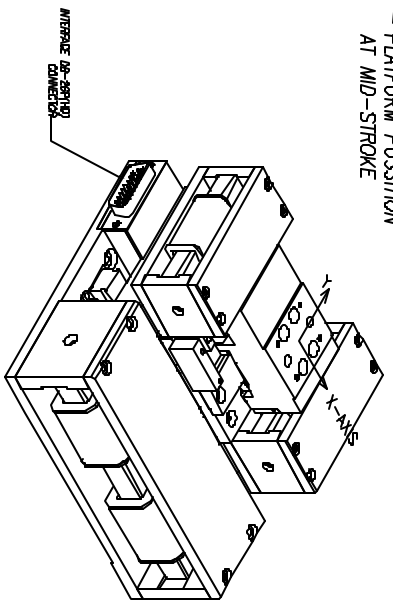
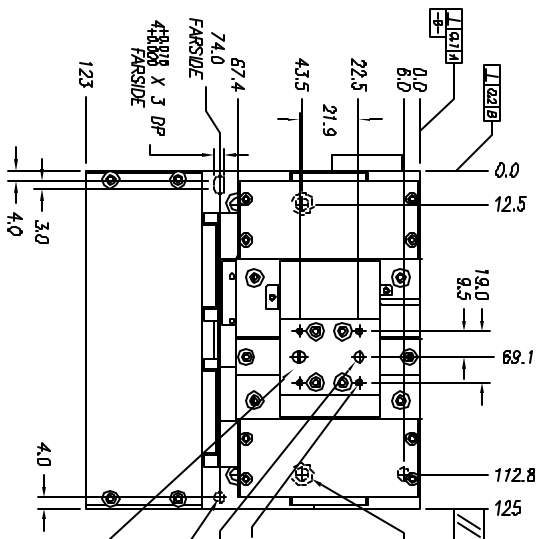
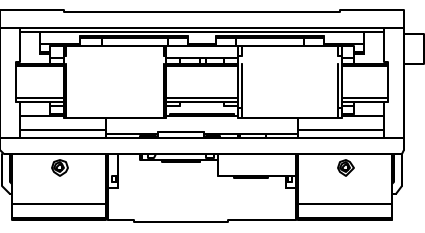
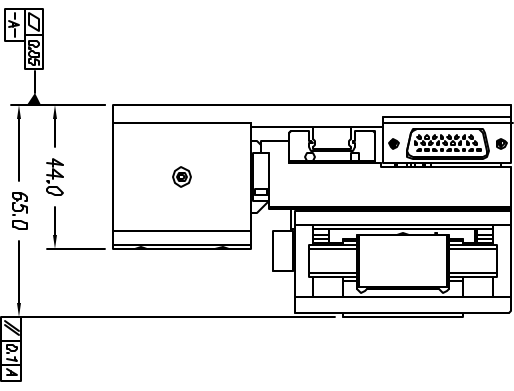
SIGNATURE NEEDED FOR ORDER APPROVAL  
 DATE \_\_\_\_\_  
 APPROVAL NOT RECEIVED WITHIN  
 48 HOURS MAY AFFECT DELIVERY

REVISIONS				
REV	DATE	EON	DESCRIPTION	APP
B	10/18/02	2803	INITIAL RELEASE	SMH
C	11/02/04	3376	ADD DOWEL HOLES ON PLATE	JN

- Y-AXIS SPECIFICATIONS:**  
 LINEAR STROKE: 25.0 MM  
 FORCE CONSTANT: 1.35 KG/AMP  
 PEAK FORCE: 4.0 KGF @ 3 AMPS TOTAL (48 VDC)  
 MAXIMUM ACCELERATION: 20 G (0 LOAD)  
 COIL DC RESISTANCE: 16.0 OHMS @ 25°C  
 ENCODER RESOLUTION: 5 MICRON-METER (INC DIRTY)  
 ENCODER ACCURACY: ±20 MICRON-METER  
 END STROKE LIMIT SW: NO (INDEX : YES)  
 NOMINAL MASS: 190 GRAMS
- X-AXIS SPECIFICATIONS:**  
 LINEAR STROKE: 25.0 MM  
 FORCE CONSTANT: 3.0 KG/AMP  
 PEAK FORCE: 9.0 KGF @ 3.0 AMPS TOTAL (48 VDC)  
 MAXIMUM ACCELERATION: 8 G (0 LOAD)  
 COIL DC RESISTANCE: 16.0 OHMS @ 25°C  
 ENCODER RESOLUTION: 5 MICRON-METER (INC DIRTY)  
 ENCODER ACCURACY: ±20 MICRON-METER  
 END STROKE LIMIT SW: NO (INDEX : YES)  
 NOMINAL MASS: 1500 GRAMS  
 TOTAL MASS: 3200 GRAMS

**DB-26P PINDOUT**

1	N/C
2	N/C
3	AXIS 1 LIMIT + INPUT
4	+5 VDC
5	+5 VDC
6	AXIS 2 ENCODER PHASE B-
7	AXIS 2 ENCODER PHASE B+
8	AXIS 1 ENCODER PHASE A-
9	AXIS 1 ENCODER PHASE A+
10	N/C
11	N/C
12	AXIS 1 COIL (+)
13	AXIS 2 COIL (-)
14	AXIS 1 COIL (-)
15	AXIS 2 ENCODER PHASE A-
16	AXIS 2 ENCODER PHASE A+
17	AXIS 1 ENCODER PHASE B-
18	AXIS 1 ENCODER PHASE B+
19	AXIS 2 COIL (+)
20	AXIS 1 LIMIT-INPUT
21	Common
22	Common
23	AXIS 2 ENCODER INDEX -
24	AXIS 2 ENCODER INDEX +
25	AXIS 1 ENCODER INDEX -
26	AXIS 1 ENCODER INDEX +



TOLERANCES ARE: X ± 0.50 XX ± 0.1 XXX ± 0.05 XXXX ± 0.05 ANGULARITY ± 0.1° CONCENTRIC ± 0.01 ROUNDNESS ± 0.05 EDGE BREAK 0.2 MAX CHAMFER 0.1 MAX	FINISH: HEAT TREAT: RC MACHINE FINISH: REEP EXCEPT NOTES: ✓ PROTECTIVE FINISH: ✓	DESIGNED BY: DAN WU DRAWN BY: S. HOOGMAN DATE: 6/25/01 DATE: 7/24/01	DATE: 6/25/01 DATE: 7/24/01	REF. NUMBER: LXY02-2525-53	COUNT/PC: STD	
FILE NAME: LXY02-2525-53	SPEC. NUMBER:	PART NAME: LXY02-2525-53 OUTLINE	SCALE: NONE	DWG. SIZE: B	PART NUMBER: LXY02-2525-53	SHEET NUMBER: 1 OF 1
						REVISION: C