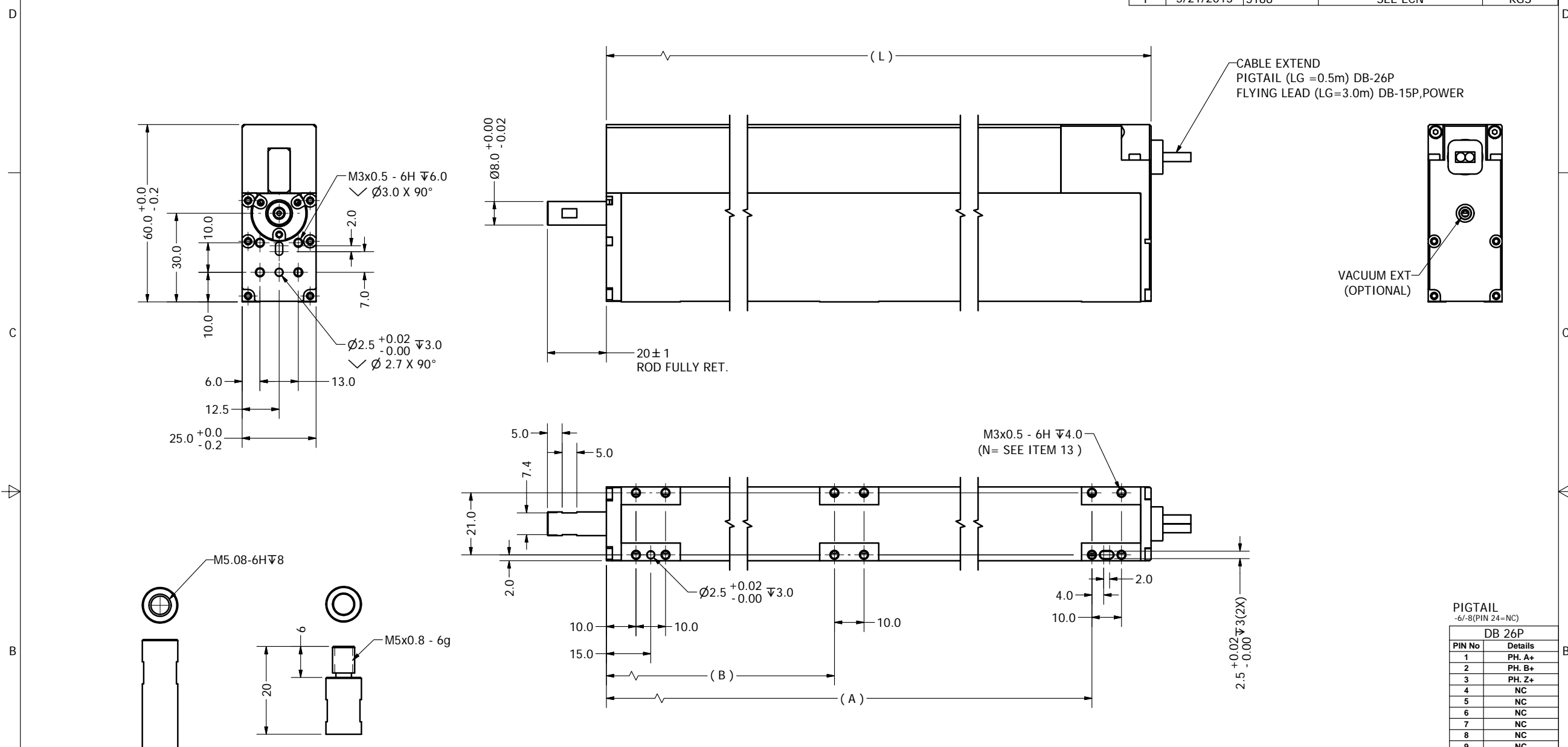


- NOTES (UNLESS OTHERWISE SPECIFIED)
1. ALL DIMENSIONS ARE IN mm UNLESS OTHERWISE NOTED.
 2. OPERATING TEMPERATURE: 0°C TO 45°C
 3. ENCODER RESOLUTION: 5, 1, 0.1um
 4. ENCODER REPEATABILITY: 4 COUNTS

| REVISION HISTORY | | | | |
|------------------|-----------|------|---------------|----------|
| REV | DATE | ECN | DESCRIPTION | APPROVED |
| G | 3/13/2011 | | RELEASE | toarvu |
| J | 6/11/12 | 4984 | SEE ECN | KGS |
| K | 6/11/2012 | | ADD 25 STROKE | KGS |
| M | 11/2/2012 | 5081 | SEE ECN | KGS |
| N | 4/4/2013 | 5188 | SEE ECN | KGS |
| P | 5/21/2013 | 5188 | SEE ECN | KGS |



PIGTAIL
-6/-8 (PIN 24=NC)

| PIN No | Details |
|--------|---------|
| 1 | PH. A+ |
| 2 | PH. B+ |
| 3 | PH. Z+ |
| 4 | NC |
| 5 | NC |
| 6 | NC |
| 7 | NC |
| 8 | NC |
| 9 | NC |
| 10 | PH. A- |
| 11 | PH. B- |
| 12 | PH. Z- |
| 13 | NC |
| 14 | NC |
| 15 | NC |
| 16 | NC |
| 17 | NC |
| 18 | NC |
| 19 | +5V DC |
| 20 | 5V RTN |
| 21 | NC |
| 22 | COIL U |
| 23 | COIL V |
| 24 | COIL W |
| 25 | NC |
| 26 | NC |

FLYING LEAD

| DB-15P | | POWER | |
|--------|---------|-------|---------|
| PIN No | Details | PIN | Details |
| 1 | PH A+ | 1 | GND |
| 2 | PH Z+ | 2 | +V |
| 3 | PH B+ | 3 | U |
| 4 | +5V | 4 | V |
| 5 | NC | 5 | W |
| 6 | NC | 6 | NC |
| 7 | NC | | |
| 8 | NC | | |
| 9 | PH A- | | |
| 10 | PH Z- | | |
| 11 | PH B- | | |
| 12 | 5V RTN | | |

| LCA25-XXX-Y | | | | | | | | | | | | | | | | |
|-------------|---------------------|------|-------------|-------------|-------------|-------------|-------------|-------------|-------------|-------------|-------------|-------------|-------------|-------------|-------------|-------------|
| No | Details | UNIT | LCA25-010-6 | LCA25-010-8 | LCA25-025-6 | LCA25-025-8 | LCA25-025-1 | LCA25-025-3 | LCA25-050-1 | LCA25-050-3 | LCA25-100-1 | LCA25-100-3 | LCA25-150-1 | LCA25-150-3 | LCA25-200-1 | LCA25-200-3 |
| 1 | LINEAR STROKE | mm | 10 | 10 | 25 | 25 | 25 | 25 | 50 | 50 | 100 | 100 | 150 | 150 | 200 | 200 |
| 2 | PEAK FORCE | N | 16 | 22 | 7.4 | 9.2 | 18 | 22 | 18 | 22 | 18 | 22 | 18 | 22 | 18 | 22 |
| 3 | FORCE CONSTANT | N/A | 5.5 | 8 | 2.5 | 3 | 13 | 14.5 | 13 | 14.5 | 13 | 14.5 | 13 | 14.5 | 13 | 14.5 |
| 6 | MAXIMUM CURRENT | Amp | 3 | 3.5 | 3 | 3 | 1.6 | 1.6 | 1.6 | 1.6 | 1.6 | 1.6 | 1.6 | 1.6 | 1.6 | 1.6 |
| 7 | COIL RESISTANCE | Ohm | 7.5 | 13.0 | 7 | 13.6 | 15 | 30 | 15 | 30 | 15 | 30 | 15 | 30 | 15 | 30 |
| 8 | MOVING MASS | Kg | 0.085 | 0.085 | .076 | .076 | .076 | .076 | .082 | .082 | .10 | .10 | .12 | .12 | .14 | .14 |
| 9 | TOTAL MASS | Kg | 0.45 | 0.45 | .55 | .55 | .55 | .53 | TBD | TBD | TBD | TBD | TBD | TBD | 1.30 | 1.30 |
| 10 | DIMENSION (L) | mm | 130 | 130 | 130 | 130 | 130 | 130 | 155 | 155 | 205 | 205 | 258 | 258 | 310 | 310 |
| 11 | DIMENSION (A) | mm | 110 | 110 | 110 | 110 | 110 | 110 | 135 | 135 | 185 | 185 | 238 | 238 | 290 | 290 |
| 12 | DIMENSION (B) | mm | N/A | N/A | N/A | N/A | N/A | N/A | N/A | N/A | 90 | 90 | 115 | 115 | 140 | 140 |
| 13 | (N) #MOUNTING HOLES | | 8 | 8 | 8 | 8 | 8 | 8 | 8 | 8 | 12 | 12 | 12 | 12 | 12 | 12 |

TOLERANCES ARE:
 X. ± 0.50
 X.X ± 0.1
 X.XX ± 0.08
 X.XXX ± 0.05
 ANGULARITY ± 0.1°
 CONCENTRIC ± 0.01
 ROUNDNESS ± 0.05
 EDGE BREAK 0.02 MAX
 CHAMFER 0.03 MAX

SMAC

DESIGNED BY: TOAN VU DATE: 11/2/2012 CHECKED BY: DATE: CONTRACT: LCA25
 DRAWN BY: KARL STOCKS DATE: 5/21/2013 APPROVED BY: DATE: CONTRACT: LCA25
 PART NAME: LCA25-XXX-Y SHEET NUMBER: 1 OF 2
 SCALE: NONE DWG SIZE: C PART NUMBER: REVISION: P
 FILE NAME: LCA25-XXX_P.idw DO NOT SCALE DWG