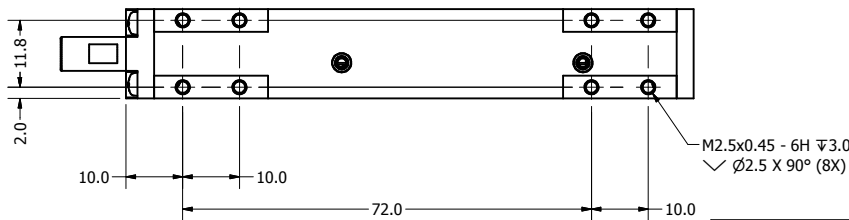
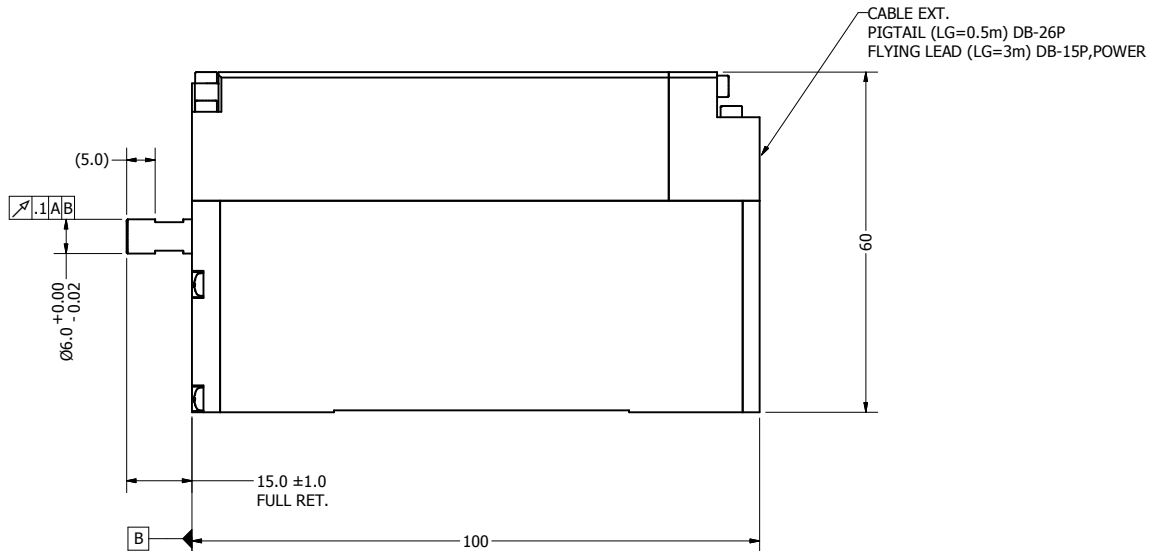
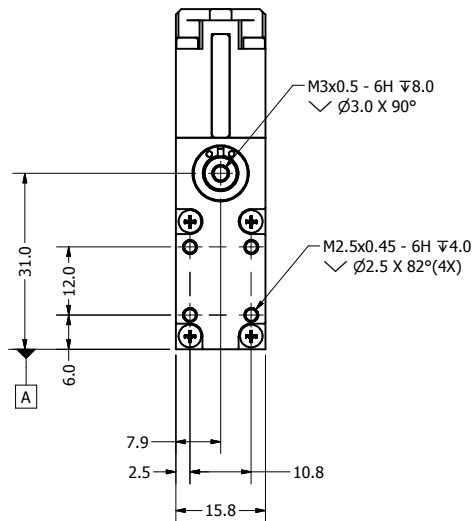


NOTES (UNLESS OTHERWISE SPECIFIED)

- ALL DIMENSIONS ARE IN mm UNLESS OTHERWISE NOTED.
- OPERATING TEMPERATURE: 0°C TO 45°C

REVISION HISTORY				
REV	DATE	ECN	DESCRIPTION	APPROVED
B	11/1/2011		PRELIMINARY	TOAN VU



LCA16-XXX-Y	
PIN No	Details
1	PH. A+
2	PH. B+
3	PH. Z+
4	NC
5	NC
6	NC
7	NC
8	NC
9	NC
10	PH. A-
11	PH. B-
12	PH. Z-
13	NC
14	NC
15	NC
16	NC
17	NC
18	NC
19	+5V DC
20	5V RTN
21	NC
22	COIL U
23	COIL V
24	COIL W
25	NC
26	NC

LCA16-XXX-Y	
PIN No	Details
1	PH A+
2	PH Z+
3	PH B+
4	+5V
5	NC
6	NC
7	NC
8	NC
9	PH A-
10	PH Z-
11	PH B-
12	5V RTN

LCA16-XXX-Y			
PIN No	Details	PIN No	Details
1	GND	1	GND
2	+V	2	+V
3	U	3	U
4	V	4	V
5	W	5	W
6	NC	6	NC

LCA16-XXX-Y				
No	Details	UNIT	LCA16-015-	LCA25-015-
1	LINEAR STROKE	mm	15	15
2	PEAK FORCE	N	7.8	10
3	MOTOR CONSTANT	N/A	5.5	4.3
4	ENCODER RESOLUTION	um	20,5,1,..1	20,5,1,..1
5	ENCODER REPEATABILITY	count	4	4
6	MAXIMUM CURRENT	A	3	3
7	COIL RESISTANCE	Ohms	8.5	17.5
8	BACK EMF	V	5.5	4.5
9	MOVING MASS	Kg	0.04	0.04
10	TOTAL MASS	Kg	0.3	0.3

TOLERANCES ARE:		MATERIAL:		REF. NUMBER	
X	\pm 0.50	SMAC			
X.X	\pm 0.1				
X.XX	\pm 0.05				
X.XXX	\pm				
ANGULARITY	\pm 0.1°				
CONCENTRICITY	\pm 0.01				
ROUNDNESS	\pm 0.05				
EDGE BREAK	0.02 MAX				
CHAMFER	0.03 MAX				
FILE NAME:	LCA16-015-6_B.idw	SPEC. NUMBER:		DO NOT SCALE DWG	
HEAT TREATMENT:		DESIGNED BY:		DATE:	
		ToanVu		8/21/2011	
DRAWN BY:		DATE:		APPROVED BY:	
ToanVu		11/1/2011			
MACHINE FINISH:		PART NAME:		SHEET NUMBER:	
3.2/		LCA16-XXX-Y		1 OF 1	
EXCEPT NOTED		SCALE:		PART NUMBER:	
PROTECTIVE FINISH:		C		LCA16-015-6	
		REVISION:		B	