

NOTES: (UNLESS OTHERWISE SPECIFIED)

- ALL DIMENSIONS ARE IN MM UNLESS OTHERWISE NOTED.
- ALL DIMENSIONS APPLY AFTER PLATING.
- ACTUATOR SPECIFICATIONS:

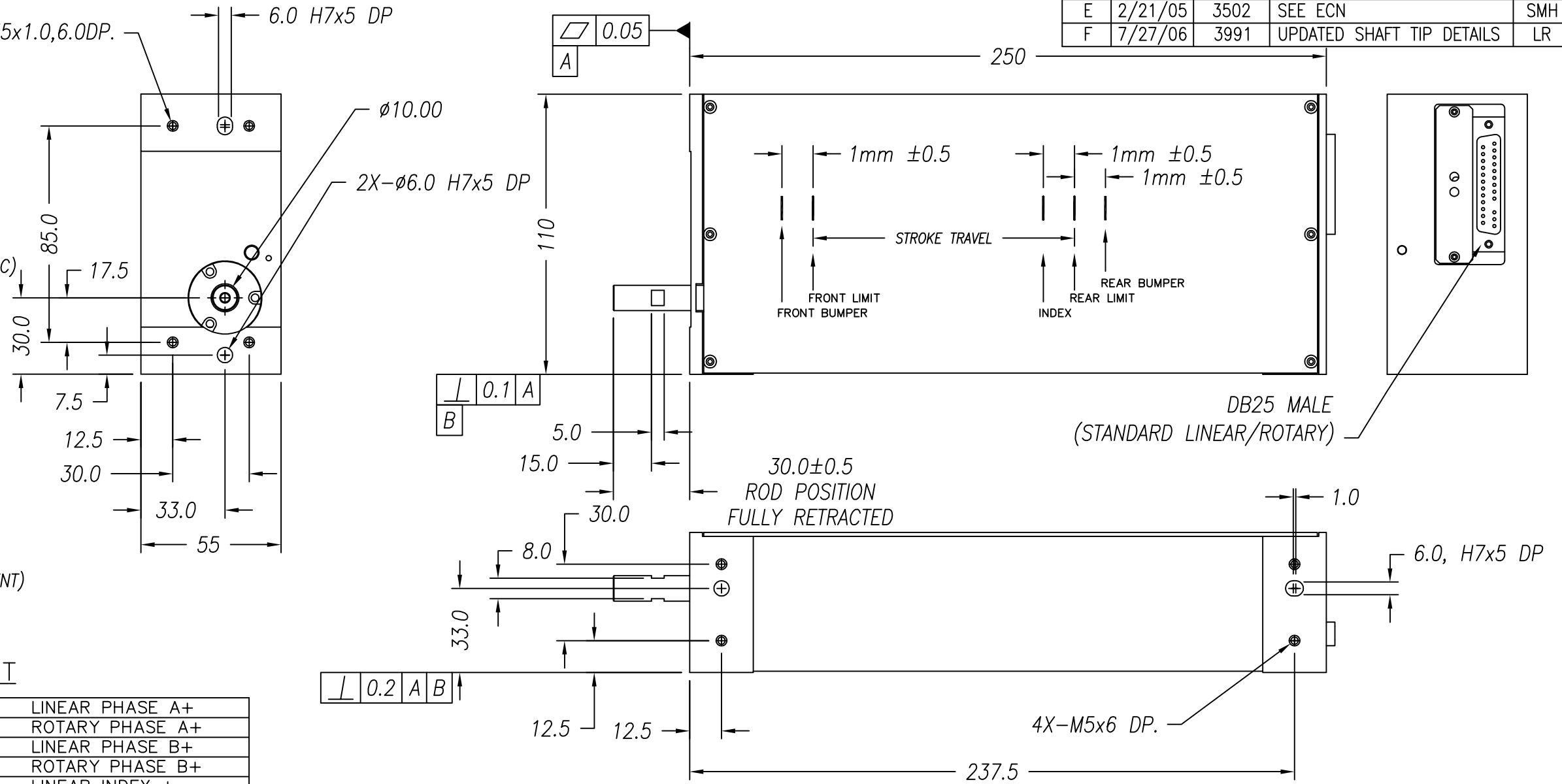
LINEAR STROKE: 100 MM
FORCE CONSTANT: 1.5 KGRAM/AMP
PEAK FORCE: 2.5 KGRAMS @1.6 AMPS (24 VDC)
COIL DC RESISTANCE: 15.1 OHMS @ 22°C
COIL INDUCTANCE: TBD mH @ 1KHz
MAXIMUM POWER DISSIPATE TO COIL: 32 WATTS
LINEAR ENCODER RESOLUTION: 5 MICRON-METER (NC)
ENCODER ACCURACY: ±20 MICRON-METER
MOVING MASS: 400 GRAMS
TOTAL MASS: 3850 GRAMS
ROTARY ANGLE: 360° FULL CIRCLE
R. MOTOR TYPE: 1524 24V NOT COMPLEMENT
STALL TORQUE: 0.26 Nm
TORQUE CONSTANT: 0.8 Nm/A (24 VDC)
CONTINUOUS TORQUE: 0.095 Nm
COIL DC RESISTANCE: 76 OHMS
GEAR RATIO: 76:1 (ZERO BACKLASH)
THETA ENCODER RESOLUTION: 0.07° (NOT COMPLEMENT)
MAX. OUTPUT SPEED: 150 RPM (NO LOAD)

- OPERATING TEMPERATURE: -10°C TO +65°C

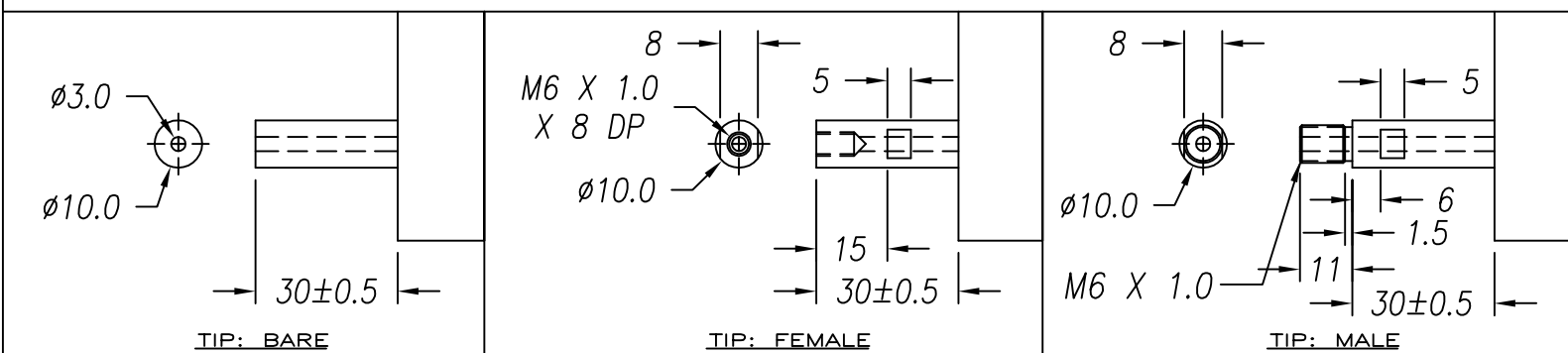
DB-25P PINOUT

1	+5VDC	14	LINEAR PHASE A+
2	+5V RETURN	15	ROTARY PHASE A+
3	ROTARY MOTOR-	16	LINEAR PHASE B+
4	LINEAR PHASE A-	17	ROTARY PHASE B+
5	NC	18	LINEAR INDEX +
6	TBD	19	COIL -
7	COIL +	20	COIL -
8	COIL +	21	ROTARY PHASE A-
9	LINEAR PHASE B-	22	ROTARY COARSE INDEX
10	ROTARY MOTOR+	23	LINEAR INDEX -
11	LIMIT + (TBD)	24	ROTARY FINE INDEX
12	LIMIT - (TBD)	25	ROTARY FINE INDEX
13	ROTARY PHASE B-		

REVISIONS				
REV	DATE	ECN	DESCRIPTION	APP
E	2/21/05	3502	SEE ECN	SMH
F	7/27/06	3991	UPDATED SHAFT TIP DETAILS	LR



SIGNATURE NEEDED FOR ORDER APPROVAL
 SIGN _____ DATE _____
 APPROVAL NOT RECEIVED WITHIN
 48 HOURS MAY AFFECT DELIVERY



TOLERANCES ARE: X. ± 0.50 X.X ± 0.1 X.XX ± 0.05 X.XXX ± ANGULARITY ± 0.1° CONCENTRIC ± 0.01 ROUNDNESS ± 0.05 EDGE BREAK 0.2 MAX CHAMFER 0.1 MAX	MATERIAL: ALUMINUM 6061-T6 HEAT TREAT: _____/_____ RC _____ DEEP MACHINE FINISH: 1.6 ✓ EXCEPT NOTED. PROTECTIVE FINISH ELECTROLESS NICKEL SPEC. NUMBER:	SMAC		REF. NUMBER LAR55-100-5	
		DESIGNED BY: TOAN VU	DATE: 07/16/01	CHECKED BY:	DATE:
FILE NAME: LAR55-100-5_F		DRAWN BY: L. RAKOW	DATE: 7/27/06	APPROVED BY:	DATE:
		PART NAME: LAR55-100-5			SHEET NUMBER: 1 of 1
		SCALE: NONE DO NOT SCALE DWG	DWG SIZE: B	PART NUMBER: LAR55-100-5	REVISION: F