

NOTES: (UNLESS OTHERWISE SPECIFIED)

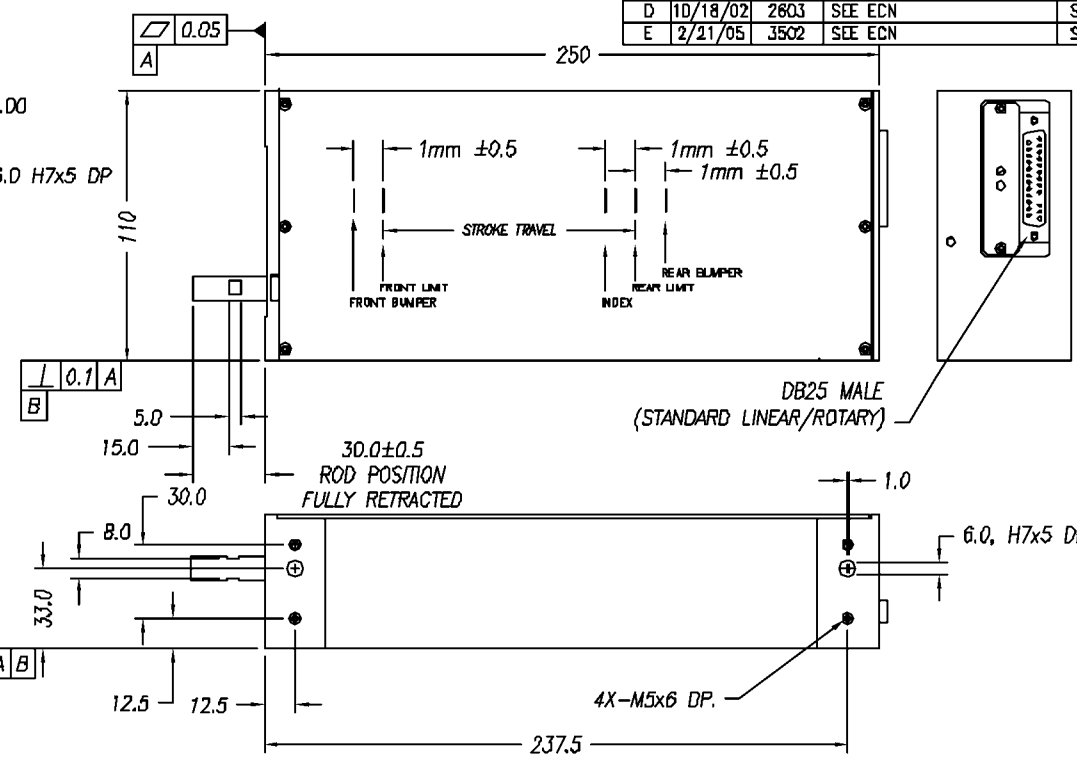
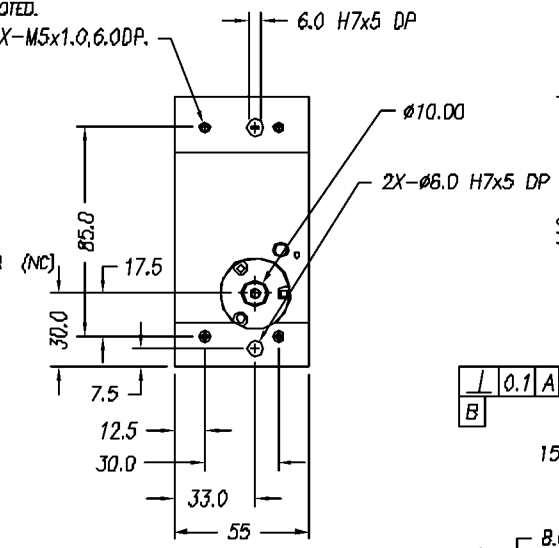
- ALL DIMENSIONS ARE IN MM UNLESS OTHERWISE NOTED.
- ALL DIMENSIONS APPLY AFTER PLATING.
- ACTUATOR SPECIFICATIONS:

LINEAR STROKE: 100 MM  
 FORCE CONSTANT: 1.5 KGRAM/AMP  
 PEAK FORCE: 2.5 KGRAMS @ 1.6 AMPS (24 VDC)  
 COIL DC RESISTANCE: 15.1 OHMS @ 22°C  
 COIL INDUCTANCE: TBD mH @ 1KHz  
 MAXIMUM POWER DISSIPATE TO COIL: 32 WATTS  
 LINEAR ENCODER RESOLUTION: 5 MICRON-METER  
 ENCODER ACCURACY: ±20 MICRON-METER  
 MOVING MASS: 400 GRAMS  
 TOTAL MASS: 3850 GRAMS  
 ROTARY ANGLE: 360° FULL CIRCLE  
 R. MOTOR TYPE: 1524 24V NOT COMPLEMENT  
 STALL TORQUE: 0.26 Nm  
 TORQUE CONSTANT: 0.8 Nm/A (24 VDC)  
 CONTINUOUS TORQUE: 0.095 Nm  
 COIL DC RESISTANCE: 76 OHMS  
 GEAR RATIO: 76:1 (ZERO BACKLASH)  
 THETA ENCODER RESOLUTION: 0.07° (NOT COMPLEMENT)  
 MAX. OUTPUT SPEED: 150 RPM (NO LOAD)

- OPERATING TEMPERATURE: -10°C TO +85°C

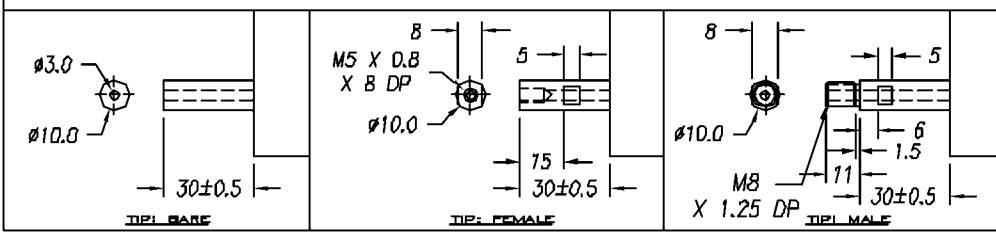
DB-25P PINOUT

1	+5VDC	14	LINEAR PHASE A+
2	+5V RETURN	15	ROTARY PHASE A+
3	ROTARY MOTOR-	16	LINEAR PHASE B+
4	LINEAR PHASE A-	17	ROTARY PHASE B+
5	NC	18	LINEAR INDEX +
6	TBD	19	COIL -
7	COIL +	20	COIL -
8	COIL +	21	ROTARY PHASE A-
9	LINEAR PHASE B-	22	ROTARY COARSE INDEX
10	ROTARY MOTOR+	23	LINEAR INDEX -
11	LIMIT + (TBD)	24	ROTARY FINE INDEX
12	LIMIT - (TBD)	25	ROTARY FINE INDEX
13	ROTARY PHASE B-		



SIGNATURE NEEDED FOR ORDER APPROVAL  
 SIGN \_\_\_\_\_ DATE \_\_\_\_\_  
 APPROVAL NOT RECEIVED WITHIN  
 48 HOURS MAY AFFECT DELIVERY

REVISIONS				
REV	DATE	ECN	DESCRIPTION	APP
D	10/18/02	2803	SEE ECN	SMH
E	2/21/05	3502	SEE ECN	SMH



TOLERANCES ARE: X ± 0.50 X.X ± 0.1 X.XX ± 0.05 X.XXX ± ANGULARITY ± 0.1° CONCENTRIC ± 0.01 ROUNDNESS ± 0.05 EDGE BREAK 0.2 MAX CHAMFER 0.1 MAX	MATERIAL: ALUMINUM 6061-T6	<b>SMAC</b>		REF. NUMBER LAR55-100-5	
				HEAT TREAT: _____ RC _____ DEEP _____	DESIGNED BY: TOAN VU
MACHINE FINISH: 1.8/ ✓		PART NAME: LAR55-100-05		SHEET NUMBER: 1 OF 1	
EXCEPT NOTED. PROTECTIVE FINISH ELECTROLESS NICKEL		SCALE: NONE	DWG SIZE: B	PART NUMBER: LAR55-100-5	
FILE NAME: LAR55-100-5		SPEC. NUMBER: _____		REVISION: E	