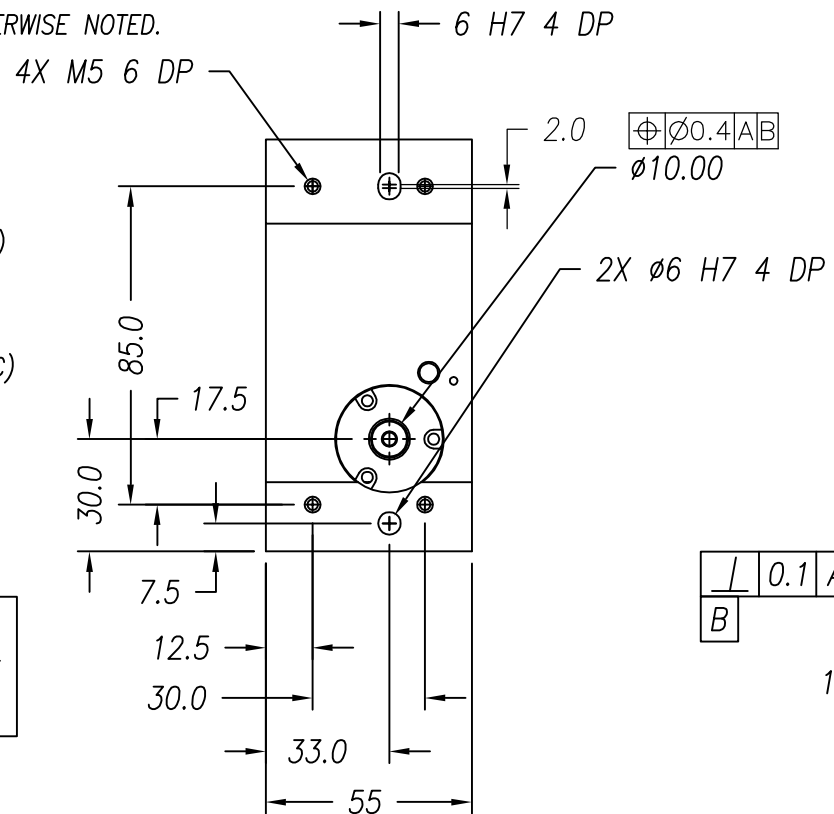
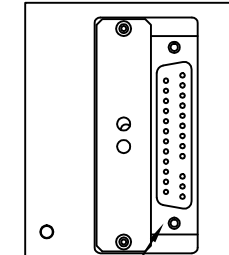
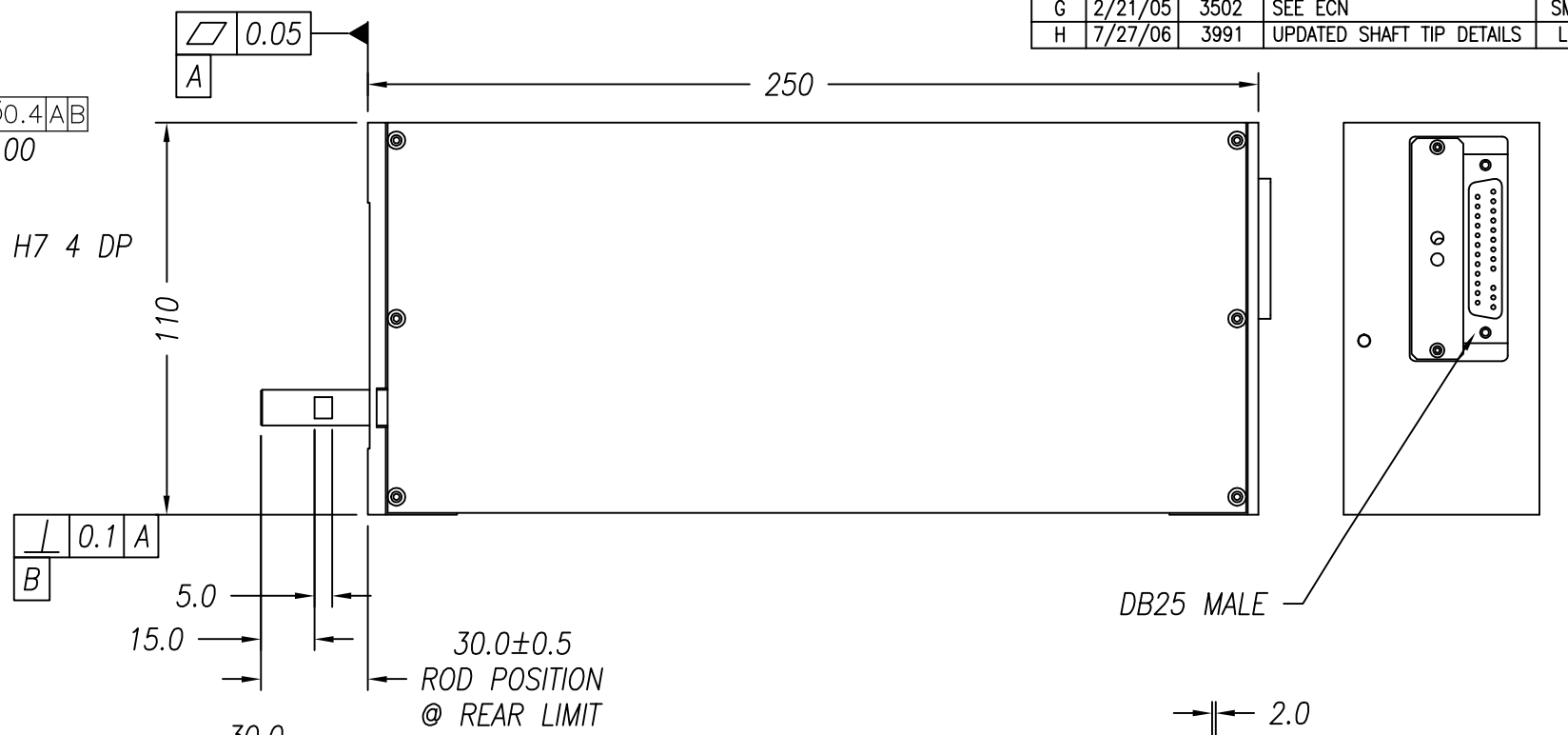


NOTES: (UNLESS OTHERWISE SPECIFIED)

- ALL DIMENSIONS ARE IN MILLIMETERS UNLESS OTHERWISE NOTED.
- LINEAR SPECIFICATION:  
 LINEAR STROKE: 50.0 +1.0/-0 mm  
 FORCE CONSTANT: 19.5 N/AMP  
 PEAK FORCE: 25.5 N @ 1.3 AMPS (24 VDC)  
 CONTINUOUS FORCE: 19.5 N @ 1.0 AMPS (24 VDC)  
 COIL DC RESISTANCE: 16.5 OHMS @ 22°C  
 COIL INDUCTANCE: 4.3 mH @ 1 kHz  
 ENCODER RESOLUTION: 0.5, 1, 5 MICROMETER (NC)  
 ENCODER ACCURACY: ±4 Counts
- MOVING MASS: 310 GRAMS
- TOTAL MASS: 3000 GRAMS
- OPERATING TEMPERATURE: -10°C TO +65°C



REVISIONS				
REV	DATE	ECN	DESCRIPTION	APP
G	2/21/05	3502	SEE ECN	SMH
H	7/27/06	3991	UPDATED SHAFT TIP DETAILS	LR

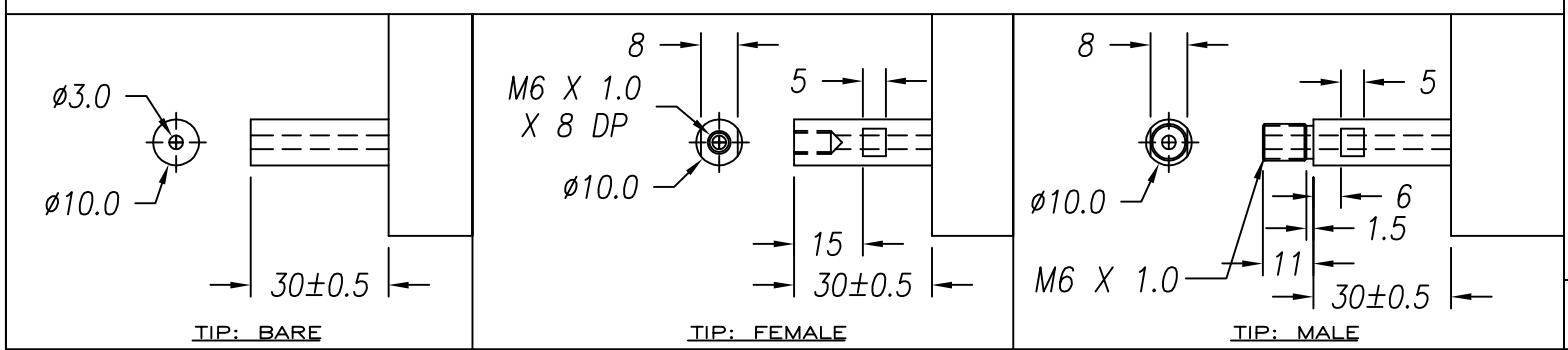
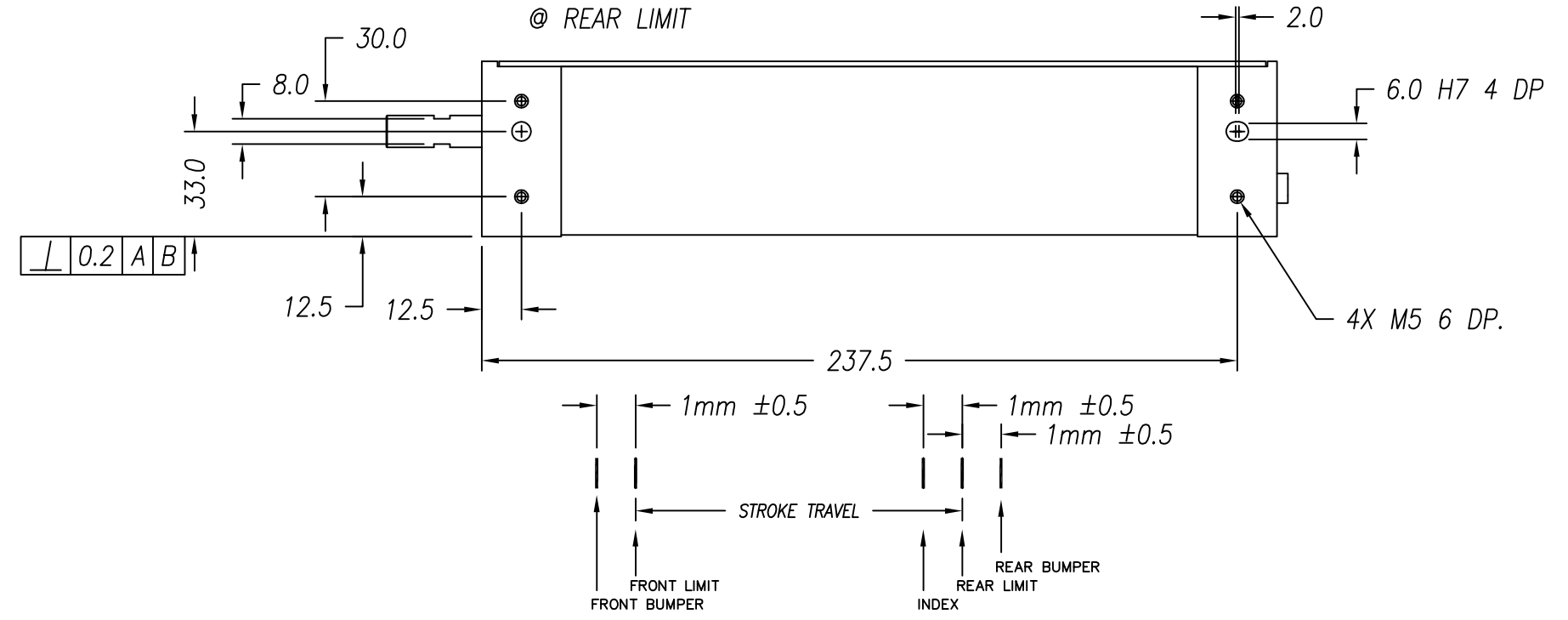


DB25 MALE

SIGNATURE NEEDED FOR ORDER APPROVAL  
 SIGN \_\_\_\_\_ DATE \_\_\_\_\_  
 APPROVAL NOT RECEIVED WITHIN  
 48 HOURS MAY AFFECT DELIVERY

DB-25P PINOUT

1	+5VDC	14	LINEAR PHASE A+
2	+5V RETURN	15	NO CONNECTION
3	NO CONNECTION	16	LINEAR PHASE B+
4	LINEAR PHASE A-	17	NO CONNECTION
5	NC	18	LINEAR INDEX +
6	LIMIT RETURN	19	COIL -
7	COIL +	20	COIL -
8	COIL +	21	NO CONNECTION
9	LINEAR PHASE B-	22	NO CONNECTION
10	NO CONNECTION	23	LINEAR INDEX -
11	LIMIT +	24	NO CONNECTION
12	LIMIT -	25	NO CONNECTION
13	NO CONNECTION		



TOLERANCES ARE: X. ± 0.50 X.X ± 0.1 X.XX ± 0.05 X.XXX ± 0.025 ANGULARITY ± 0.1° CONCENTRIC ± 0.01 ROUNDNESS ± 0.05 EDGE BREAK 0.2 MAX CHAMFER 0.2 MAX	MATERIAL: ALUMINUM 6061-T6	SMAC		REF. NUMBER LAL55-050-5	
		HEAT TREAT: _____ RC _____ DEEP	DESIGNED BY: TOAN VU	DATE: 09/09/02	CHECKED BY:
MACHINE FINISH: 1.6 ✓	EXCEPT NOTED. ✓ PROTECTIVE FINISH ELECTROLESS NICKEL	DRAWN BY: L. RAKOW	DATE: 7/26/06	APPROVED BY:	SHEET NUMBER: 1 of 1
		FILE NAME: LAL55-050-5_H	PART NAME: LAL55-050-5	SCALE: NONE	DWG SIZE: B