

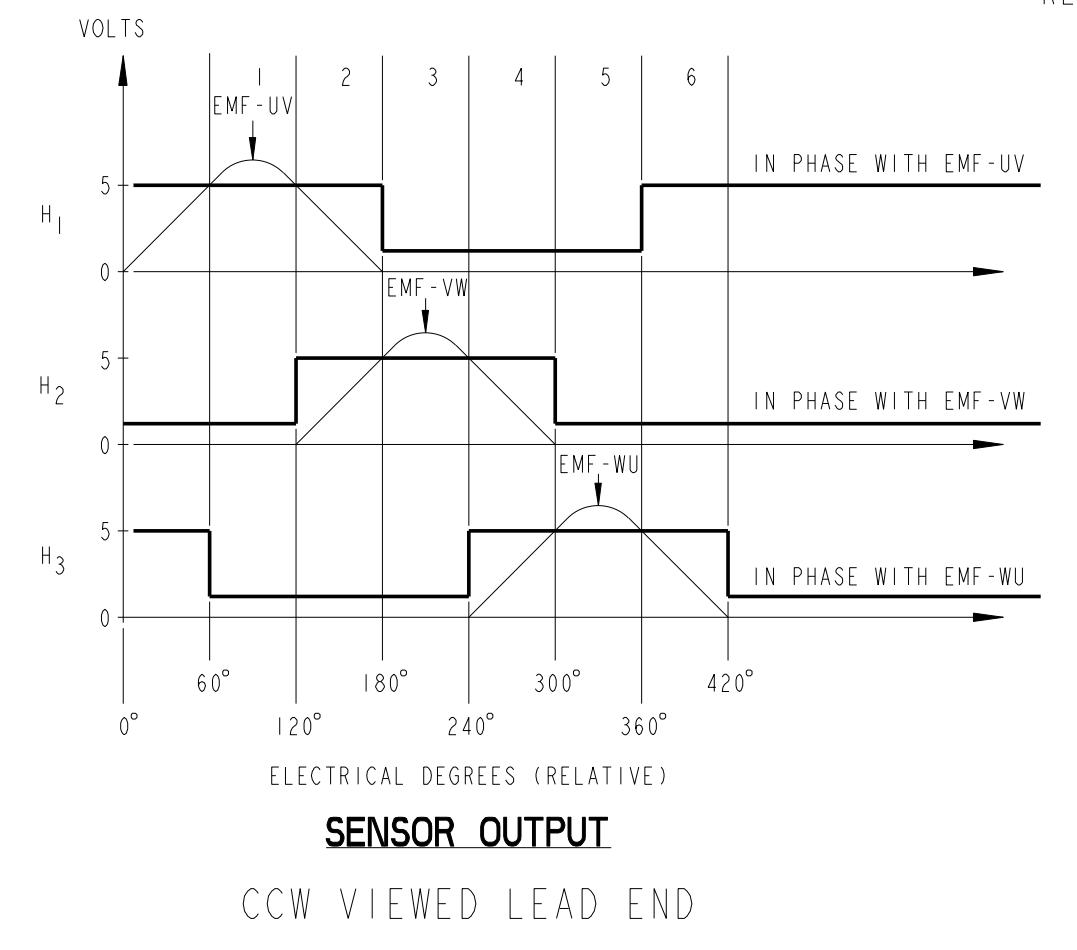
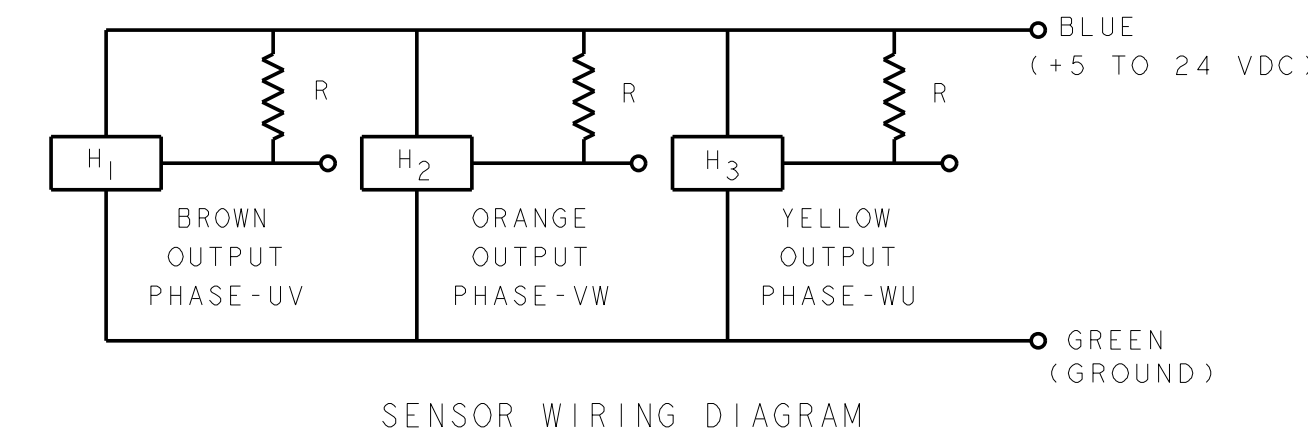
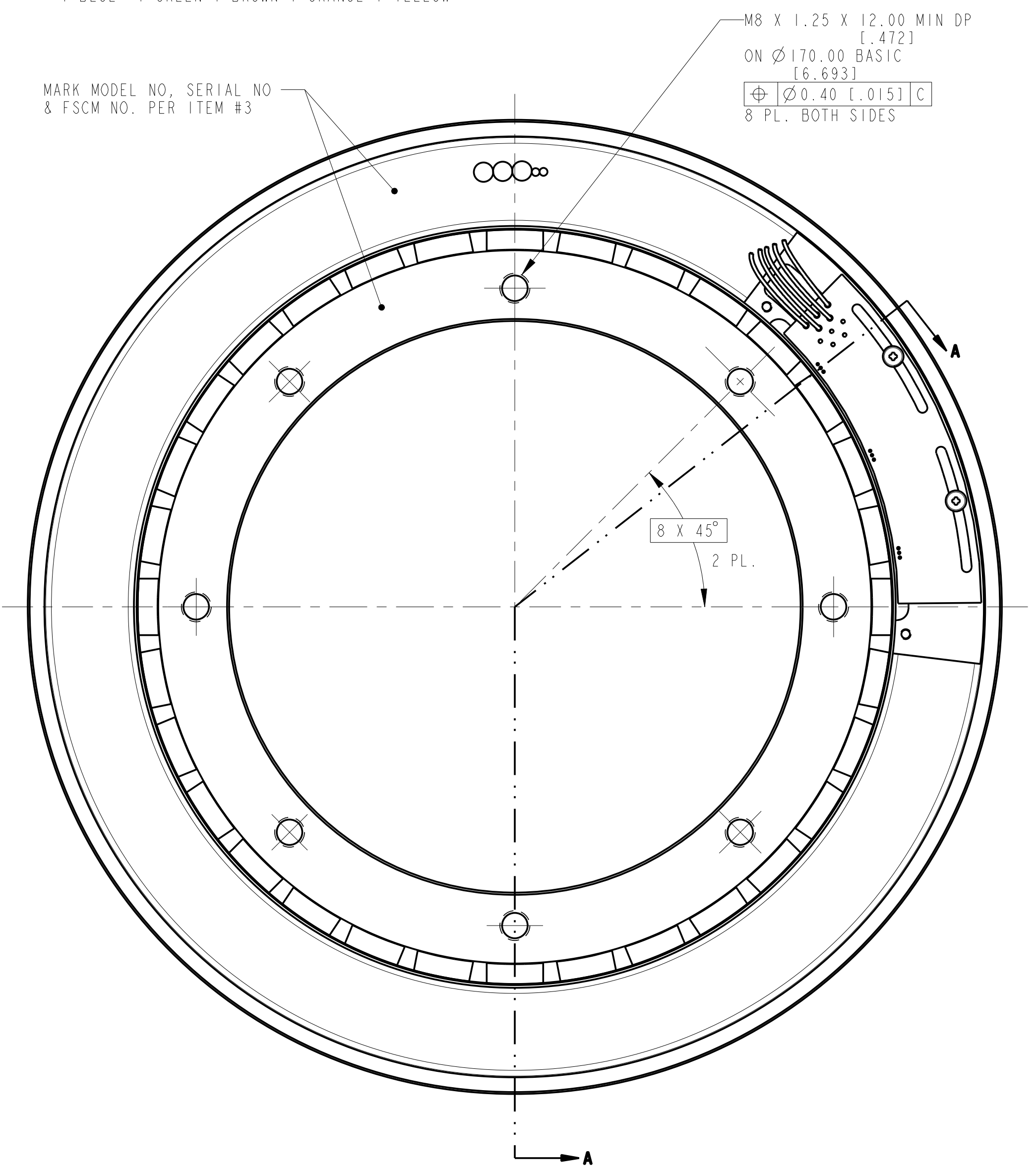
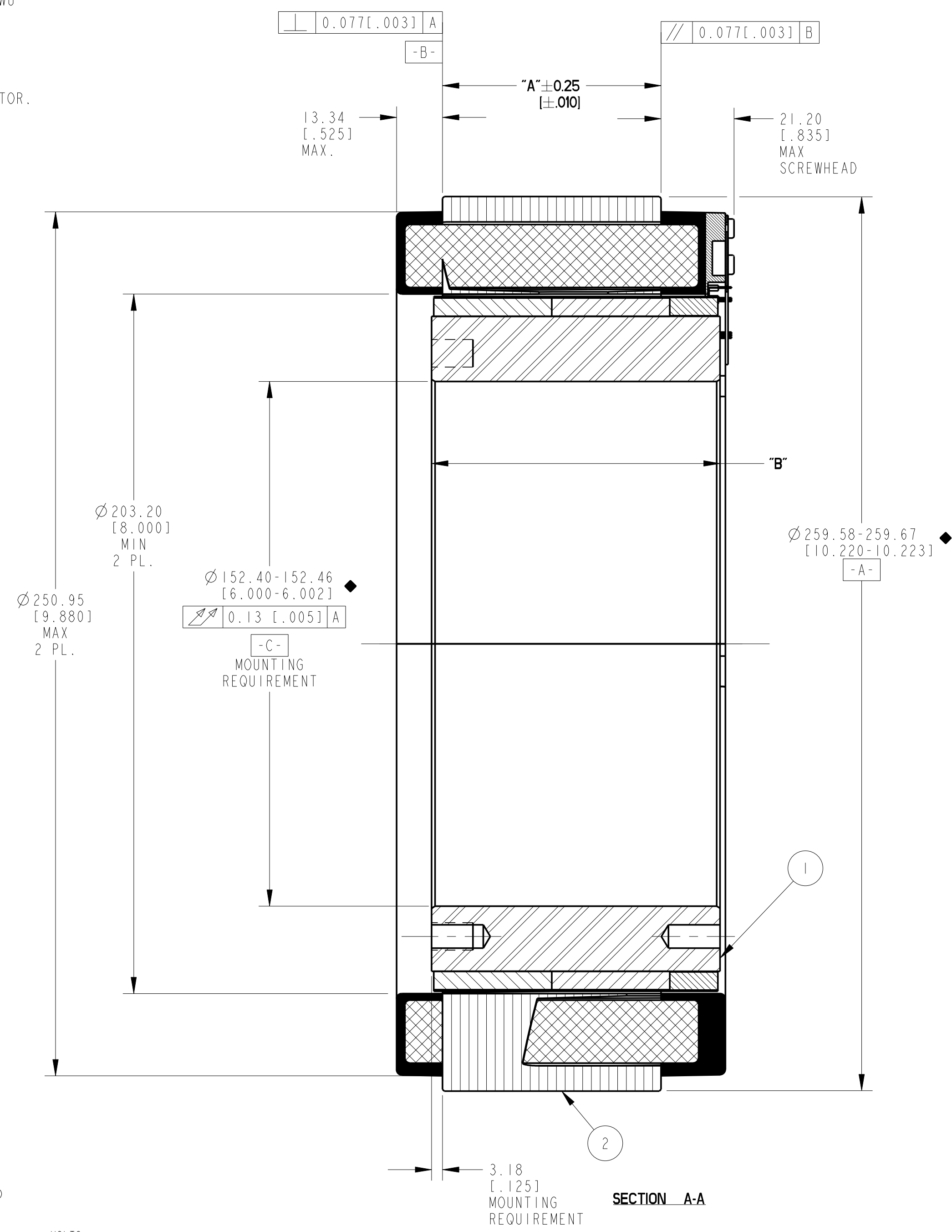
REVISION				
REV	ECN NO.	DESCRIPTION	DATE	APPROVED
A	R01.13981	SEE ECO	L&T	22-Nov-10 LW
B	R01.14394	SEE ECO	L&T	19-Apr-11 LW
C	R01.15666	SEE ECO	ALM	9/4/13 KLR

NOTES:  
 1. FOR A C.C.W. ROTATION, AS VIEWED FROM LEAD END, ENERGIZE PER EXCITATION SEQUENCE BELOW.  
 2. MOTOR SUPPLIED AS TWO SEPARATE COMPONENTS, ARMATURE & SENSOR ASSEMBLY AND FIELD ASSEMBLY.  
 3. R=1.5k OHMS APPROXIMATELY (CUSTOMER SUPPLIED).  
 4. EMF-UV, EMF-VW, AND EMF-WU IS BACK EMF OF MOTOR PHASES UV, VW, AND WU ALIGNED WITH SENSOR OUTPUT SHOWN FOR CCW ROTATION ONLY.  
 5. MINIMUM MOUNTING SURFACE FROM 251.71[9.910] TO 259.60[10.220] BOTH SIDES.  
 6. DIMENSIONS IN BRACKETS [ ] ARE ENGLISH UNITS FOR REFERENCE ONLY.  
 7. NO ANGULAR RELATIONSHIP BETWEEN MOUNTING HOLES ON EITHER SIDE OF ROTOR.  
 8. RoHS (DIRECTIVE 2002/95/EC AND AMMENDMENTS) COMPLIANCE REQUIRED.

**MOTOR LEADS :**  
 #16 AWG, TEFLON INSULATED, U.L. 1199  
 3 LEADS, 400 MM [15.75"] MIN  
 1- BLUE 1-BROWN 1-VIOLET

**THERMISTOR LEADS :**  
 #26 AWG, TEFLON INSULATED  
 2 LEADS, 400 MM [15.75"] MIN  
 1-BLUE 1-RED

**SENSOR LEADS :**  
 #26 AWG, TEFLON COATED PER MIL-W-22750/11  
 5 LEADS, 400 MM [15.75"] MIN  
 1-BLUE 1-GREEN 1-BROWN 1-ORANGE 1-YELLOW



MODEL NUMBER	ARMATURE ASSY H.V. INSULATION	ARMATURE ASSY STD. INSULATION	FIELD ASSEMBLY	DIM "A"	DIM "B"
KBMS-79X01	946621/01X	946622/01X	946623/01	31.75 [1.250]	52.07 [2.050]
KBMS-79X02	946621/02X	946622/02X	946623/02	63.50 [2.500]	83.82 [3.300]
KBMS-79X03	946621/03X	946622/03X	946623/03	127.00 [5.000]	147.07 [5.790]
KBMS-79X04	946621/04X	946622/04X	946623/04	170.94 [6.730]	191.26 [7.530]
KBMS-79X05	946621/05X	946622/05X	946623/05	214.89 [8.460]	235.46 [9.270]

THIS DOCUMENT IS ONLY FOR USE BY THE INTENDED RECIPIENT AND CONTAINS KOLLMORGEN CONFIDENTIAL INFORMATION

STEP	PHASE "U" BLUE	PHASE "V" BROWN	PHASE "W" VIOLET
1	(+)	(-)	(-)
2	(+)	(-)	(-)
3	(-)	(+)	(-)
4	(-)	(+)	(-)
5	(-)	(-)	(+)
6	(-)	(-)	(+)

EXCITATION SEQUENCE TABLE

3	AR	IM-2709	MARKING PROCEDURE
2	I	SEE TABLE	ARMATURE ASSY
1	I	SEE TABLE	FIELD ASSEMBLY
ITEM	QTY	IDENTIFYING NO.	DESCRIPTION
LIST OF PARTS			
UNLESS OTHERWISE SPECIFIED: REMOVE ALL SHARP BURRS AND BREAK ALL SHARP EDGES X DECIMAL PLACES ±.4 [.015] XX DECIMAL PLACES ±.13 [.005] ANGULAR DIMENSIONS ±1°		<b>KOLLMORGEN</b> Inland Motor INLAND MOTOR 501 FIRST STREET RADFORD, VIRGINIA 24141	
DO NOT SCALE DRAWING, USE DIMENSIONS ONLY ALL DIMENSIONS ARE IN MILLIMETERS DIMENSIONS IN BRACKETS [ ] ARE IN INCHES AND ARE FOR REFERENCE ONLY INTERPRET GEOMETRIC SYMBOLS PER ANSI Y14.3M-1992		FSCM <b>11384</b>	SIZE DWG. NO. <b>D 946620</b>
SCALE: 1:000	JOB NO.:	SHEET 1 OF 1	

**METRIC DRAWING**

SIGNIFICANT PRODUCT CHARACTERISTIC  
 CRITICAL PRODUCT CHARACTERISTIC