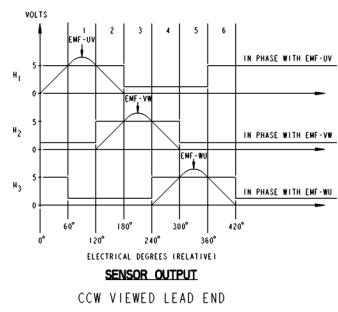
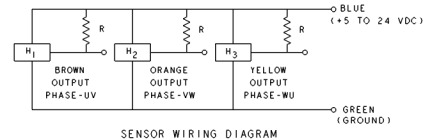
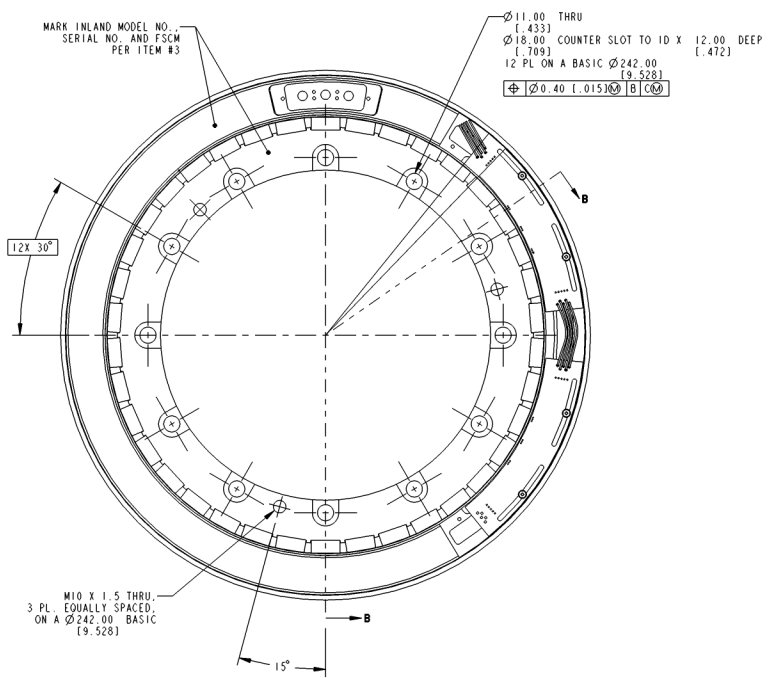
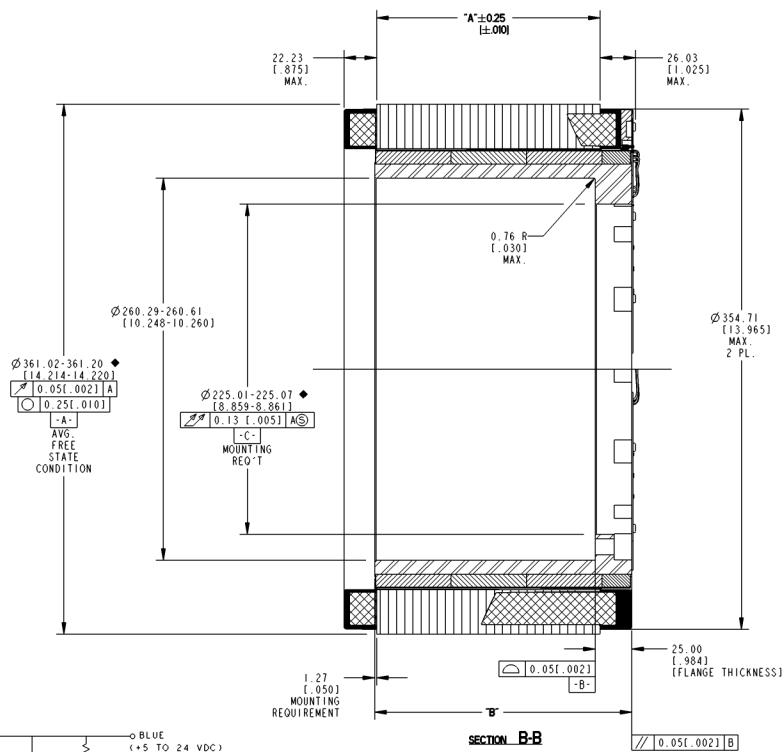


946289

REVISION					
REV	ECN NO.	DESCRIPTION	DATE	APPROVED	
A	R01-13452	SEE ECO	HLW	3-05-2010	TMB
B	R01-14448	SEE ECO	LAT	19-May-11	LW

- NOTES:
- FOR A.C.C.W. ROTATION, AS VIEWED FROM LEAD END, ENERGIZE PER EXCITATION SEQUENCE BELOW
 - MOTOR SUPPLIED AS TWO SEPARATE COMPONENTS, ARMATURE ASSEMBLY, AND FIELD ASSEMBLY.
 - RECOMMENDED MOUNTING: O.D. SHRINK FIT
 - RTI: 5% OHMS APPROXIMATELY (CUSTOMER SUPPLIED)
 - EMF-UV, EMF-VW AND EMF-WU IS BACK EMF OF MOTOR PHASE, UV, VW AND WU ALIGNED WITH SENSOR OUTPUT SHOWN FOR C.C.W. ROTATION ONLY
 - DIMENSIONS IN BRACKETS [] ARE ENGLISH UNITS FOR REFERENCE ONLY.
 - RoHS (DIRECTIVE 2002/95/EC AND AMENDMENTS) COMPLIANCE REQUIRED.

- MOTOR LEADS:
 #10 AWG, TEFLON INSULATED, U.L. 1199
 3 LEADS, 900 MM (35") MIN
 1 - BLUE 1 - BROWN 1 - VIOLET
- THERMISTOR LEADS:
 #26 AWG, TEFLON INSULATED
 4 LEADS, 900 MM (35") MIN
 2 - BLUE 2 - RED
- SENSOR LEADS:
 #26 AWG TEFLON COATED PER MIL-W-22759/11
 5 LEADS, 900 MM (35") MIN
 1-BLUE 1-GREEN 1-BROWN 1-ORANGE 1-YELLOW



MODEL NUMBER	ARMATURE & SENSOR ASSY HV. INSULATION	ARMATURE & SENSOR ASSY STD. INSULATION	FIELD ASSEMBLY	DIM "A"	DIM "B"
KBMS-118X00	946290/00X	946291/00X	946292/00	50.80 [2.000]	72.39 [2.850]
KBMS-118X01	946290/01X	946291/01X	946292/01	101.60 [4.000]	123.83 [4.875]
KBMS-118X02	946290/02X	946291/02X	946292/02	152.40 [6.000]	175.26 [6.900]
KBMS-118X03	946290/03X	946291/03X	946292/03	203.20 [8.000]	226.70 [8.925]
KBMS-118X04	946290/04X	946291/04X	946292/04	254.00 [10.000]	278.13 [10.950]

STEP	PHASE "U"	PHASE "V"	PHASE "W"
1	⊙	⊙	⊙
2	⊙	⊙	⊙
3	⊙	⊙	⊙
4	⊙	⊙	⊙
5	⊙	⊙	⊙
6	⊙	⊙	⊙

EXCITATION SEQUENCE TABLE

THIS DOCUMENT IS ONLY FOR USE BY THE INTENDED RECIPIENT AND CONTAINS KOLLMOERGEN CONFIDENTIAL INFORMATION

Print Instance No: 0001010101010101
 Print Drawing No: 946289
 Print Model Type: ASSEM
 Pro/Engineer Drawing

METRIC DRAWING

UNLESS OTHERWISE SPECIFIED: REMOVE ALL SHARP EDGES AND BREAK ALL SHARP EDGES. X DECIMAL PLACES ± 4 (1.015) XX DECIMAL PLACES ± 13 (0.005) ANGULAR DIMENSIONS ± 1'

CRITICAL PRODUCT CHARACTERISTIC

3	AR	IM-2709	MARKING PROCEDURE
2	I	SEE TABLE	FIELD ASSEMBLY
1	I	SEE TABLE	ARMATURE ASSEMBLY
ITEM	QTY	IDENTIFYING NO.	DESCRIPTION
LIST OF PARTS			
KOLLMORGEN		1400 AND 1600 804 VICE STREET RADFORD, VIRGINIA 24141	
Inland Motor			
OUTLINE AND ASSEMBLY KBMS-118XXX-X00			
UNLESS OTHERWISE SPECIFIED: REMOVE ALL SHARP EDGES AND BREAK ALL SHARP EDGES. X DECIMAL PLACES ± 4 (1.015) XX DECIMAL PLACES ± 13 (0.005) ANGULAR DIMENSIONS ± 1'		SCALE: 0.600 JOB NO.:	
DATE	22-Jul-09	FSCM	SIZE
BY	LW	11384	D
CHKD	HLW	946289	B
APP'D	HLW		
DATE	10-Sep-09		