


CATALOG CODE MH-14-X.X

TORQUE N-m	
1.4	
1.8	
2.2	
2.6	
3.0	
3.4	
3.8	
4.2	
4.6	
5.0	
5.4	
5.8	

NOTES:

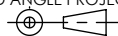
1. USER MUST DETERMINE FITNESS FOR USE IN APPLICATION.
2. LIFE: 20,000 CYCLES.
ONE CYCLE = 120° OPEN/120° CLOSED.
FIVE(5) CYCLES PER MINUTE MAX.
3. MATERIAL:
BRACKETS ARE ENGINEERED PLASTIC
SHAFT AND TORQUE ELEMENT ARE HARDENED STEEL
- [4] DESIGNED TO ACCEPT M6 BUTTON HEAD SCREW OR EQUIVALENT.
- [5] BRACKETS TO BE ORIENTED ±5° WITH RESPECT TO EACH OTHER AS SHOWN.
6. TOTAL TRAVEL 270°.
7. STATIC TORQUE IS NORMALLY WITHIN 10% OF DYNAMIC TORQUE.
8. TOP SURFACE TEXTURED.

ALL DIMENSIONS REFERENCE
SEE CAD MODEL FOR
UNSPECIFIED FEATURES

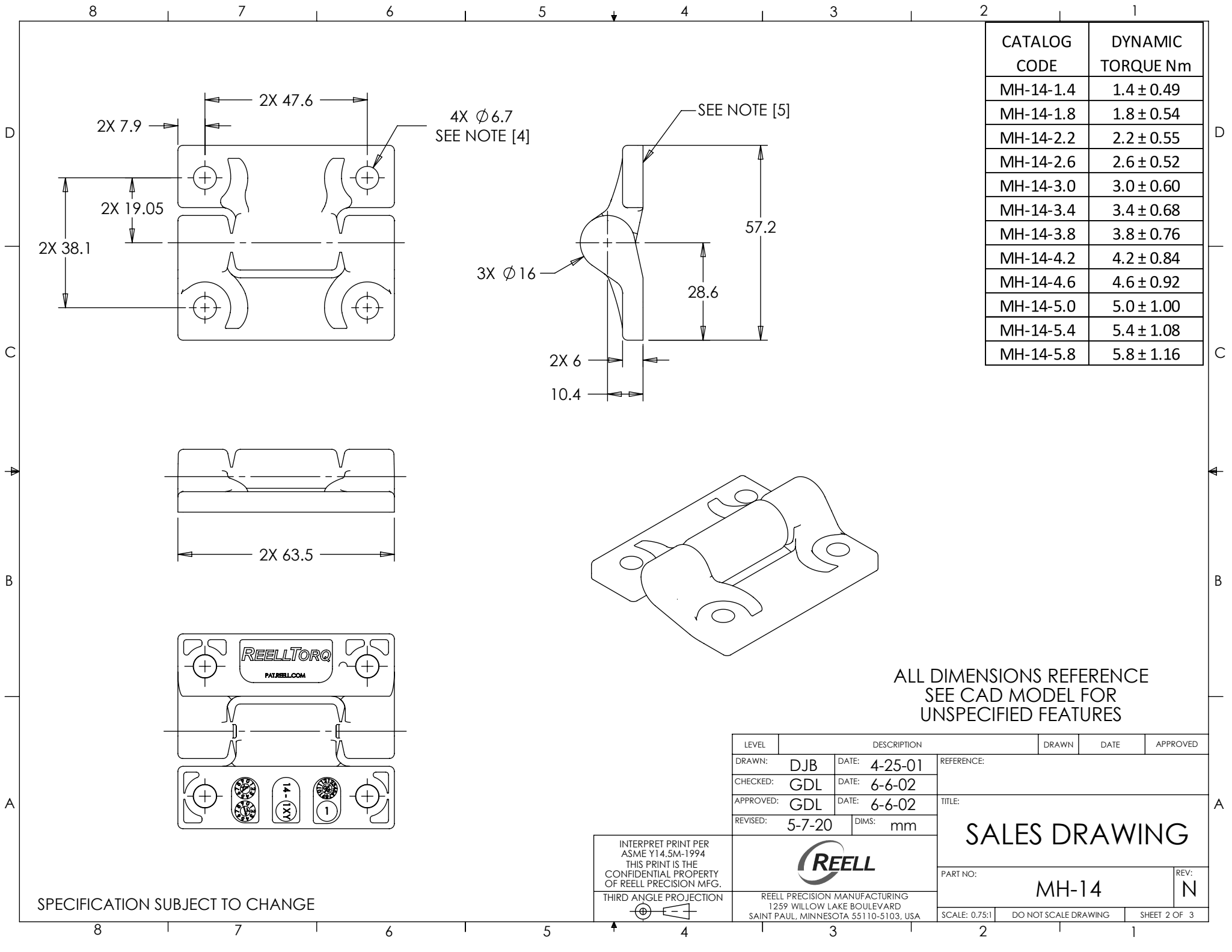
LEVEL	DESCRIPTION		DRAWN	DATE	APPROVED
DRAWN:	DJB	DATE: 4-25-01	REFERENCE:		
CHECKED:	GDL	DATE: 6-6-02	TITLE:		
APPROVED:	GDL	DATE: 6-6-02	SALES DRAWING		
REVISED:	5-7-20	DIMS: mm			
			PART NO:		REV:
			MH-14		N
SCALE: 0.75:1			DO NOT SCALE DRAWING		SHEET 1 OF 3

INTERPRET PRINT PER
ASME Y14.5M-1994
THIS PRINT IS THE
CONFIDENTIAL PROPERTY
OF REELL PRECISION MFG.

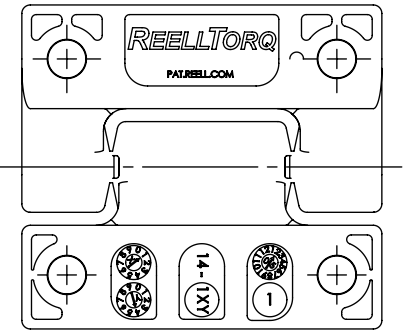
THIRD ANGLE PROJECTION



SPECIFICATION SUBJECT TO CHANGE



CATALOG CODE	DYNAMIC TORQUE Nm
MH-14-1.4	1.4 ± 0.49
MH-14-1.8	1.8 ± 0.54
MH-14-2.2	2.2 ± 0.55
MH-14-2.6	2.6 ± 0.52
MH-14-3.0	3.0 ± 0.60
MH-14-3.4	3.4 ± 0.68
MH-14-3.8	3.8 ± 0.76
MH-14-4.2	4.2 ± 0.84
MH-14-4.6	4.6 ± 0.92
MH-14-5.0	5.0 ± 1.00
MH-14-5.4	5.4 ± 1.08
MH-14-5.8	5.8 ± 1.16



ALL DIMENSIONS REFERENCE
SEE CAD MODEL FOR
UNSPECIFIED FEATURES

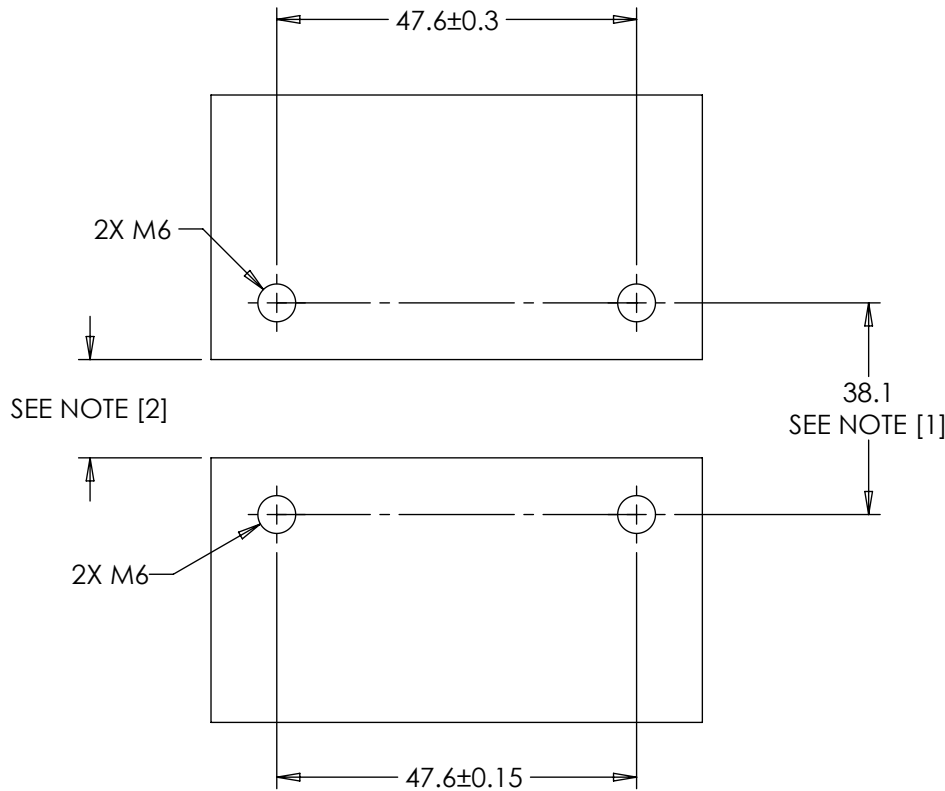
LEVEL	DESCRIPTION	DRAWN	DATE	APPROVED
DRAWN:	DJB	DATE:	4-25-01	REFERENCE:
CHECKED:	GDL	DATE:	6-6-02	TITLE:
APPROVED:	GDL	DATE:	6-6-02	SALES DRAWING
REVISED:	5-7-20	DIMS:	mm	
INTERPRET PRINT PER ASME Y14.5M-1994 THIS PRINT IS THE CONFIDENTIAL PROPERTY OF REELL PRECISION MFG. THIRD ANGLE PROJECTION				PART NO:
REELL PRECISION MANUFACTURING 1259 WILLOW LAKE BOULEVARD SAINT PAUL, MINNESOTA 55110-5103, USA		SCALE: 0.75:1 DO NOT SCALE DRAWING		REV: N

SPECIFICATION SUBJECT TO CHANGE

CUSTOMER MOUNTING CONFIGURATION:

NOTES:

- [1] USER WITH CRITICAL MOUNTING INTERFACES (I.E. LATCHES) SHOULD ALIGN PLATES TO ± 0.1 .
- [2] USER TO DETERMINE MINIMUM DISTANCE BASED ON MOUNTING PLATE THICKNESS AND DESIRED ANGLE OF ROTATION.
- 3. MATING ASSEMBLIES SHOULD BE DESIGNED TO ALLOW 0.5 NOMINAL CLEARANCE AROUND ENTIRE ASSEMBLY.



SPECIFICATION SUBJECT TO CHANGE

LEVEL	ECO - DESCRIPTION		DRAWN	DATE	APPROVED
DRAWN:	DJB	DATE: 4-25-01	REFERENCE:		
CHECKED:	GDL	DATE: 6-6-02	TITLE:		
APPROVED:	GDL	DATE: 6-6-02	SALES DRAWING		
REVISED:	5-7-20	DIMS: mm			
INTERPRET PRINT PER ASME Y14.5M-1994 THIS PRINT IS THE CONFIDENTIAL PROPERTY OF REELL PRECISION MFG. THIRD ANGLE PROJECTION			PART NO:		REV:
			MH-14		N
REELL PRECISION MANUFACTURING 1259 WILLOW LAKE BOULEVARD SAINT PAUL, MINNESOTA 55110-5103, USA			SCALE: 1:1	DO NOT SCALE DRAWING	SHEET 3 OF 3