



CATALOG CODE MH-10-X.X-X

TORQUE (Nm)

1.5
2.5
3.5

DIRECTION

F - FORWARD
R- REVERSE

NOTES:

1. DYNAMIC TORQUE AND PART NUMBERS SEE PAGE 2.
2. LIFE: 20,000 CYCLES.
ONE CYCLE = 120° OPEN/120° CLOSED.
FIVE (5) CYCLES PER MINUTE MAX.
3. MATERIAL:
CENTER BRACKET: ENGINEERED PLASTIC
OUTER BRACKET: ENGINEERED PLASTIC
SHAFT: HARDENED STEEL
TORQUE ELEMENT: HARDENED STEEL
TORQUE INSERT HOUSING AND BUSHINGS ARE ZINC
4. DESIGNED TO ACCEPT M5 BUTTON HEAD SCREW OR EQUIVALENT.
5. BRACKETS TO BE ORIENTED $\pm 5^\circ$ WITH RESPECT TO EACH OTHER AS SHOWN.
6. TOTAL TRAVEL 270°.
7. STATIC TORQUE IS NORMALLY WITHIN 10% OF DYNAMIC TORQUE.
8. TOP SURFACE TEXTURED.
9. MATING ASSEMBLIES SHOULD BE DESIGNED TO ALLOW 0.5 mm CLEARANCE AROUND ENTIRE HINGE.
10. USER MUST DETERMINE FITNESS FOR USE IN APPLICATION.



REELL PRECISION MANUFACTURING
1259 WILLOW LAKE BOULEVARD
SAINT PAUL, MINNESOTA 55110-5103, USA

THIS PRINT IS THE CONFIDENTIAL PROPERTY
OF REELL PRECISION MFG.

INTERPRET PRINT PER ASME Y14.5M-2009

ECO NO: 07461

APPROVED BY: BOB WAHLSTEDT

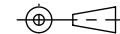
APPROVED DATE: 10SEP24

PROJECT NO: 101739

ENGINEER: TIM JENUM

DRAWN BY: TIM JENUM

THIRD ANGLE PROJECTION



DIMENSIONS: mm

PART LIFECYCLE: RELEASED

DEVELOPMENT CYCLE: PRE-PRODUCTION

DESCRIPTION:

SALES DRAWING

PART NO:

MH-10

REV:

6

SCALE: 1:1

DO NOT SCALE DRAWING

SHEET 1 OF 2

CATALOG CODE	DIRECTION	DYNAMIC TORQUE	
		FORWARD	REVERSE
MH-10-1.5-F	FORWARD	1.5 ± 0.5 Nm	0.94 ± 0.3 Nm
MH-10-2.5-F	FORWARD	2.5 ± 0.9 Nm	1.56 ± 0.5 Nm
MH-10-3.5-F	FORWARD	3.5 ± 1.2 Nm	2.19 ± 0.7 Nm
MH-10-1.5-R	REVERSE	0.94 ± 0.3 Nm	1.5 ± 0.5 Nm
MH-10-2.5-R	REVERSE	1.56 ± 0.5 Nm	2.5 ± 0.9 Nm
MH-10-3.5-R	REVERSE	2.19 ± 0.7 Nm	3.5 ± 1.2 Nm

ALL HINGE DIMENSIONS REFERENCE
SEE CAD MODEL FOR
UNSPECIFIED FEATURES

DETERMINE MINIMUM
DISTANCE BASED ON PLATE
THICKNESS AND DESIRED
ANGLE OF ROTATION

CUSTOMER MOUNTING CONFIGURATION
FOR M5 SCREWS

D

D

C

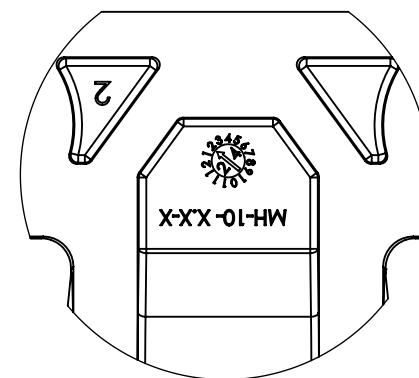
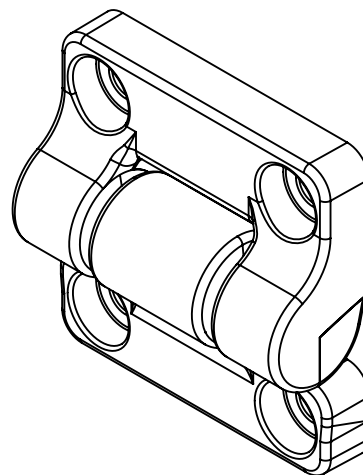
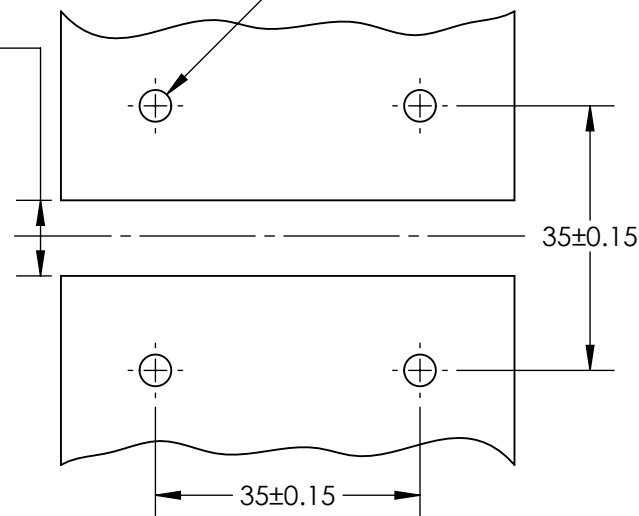
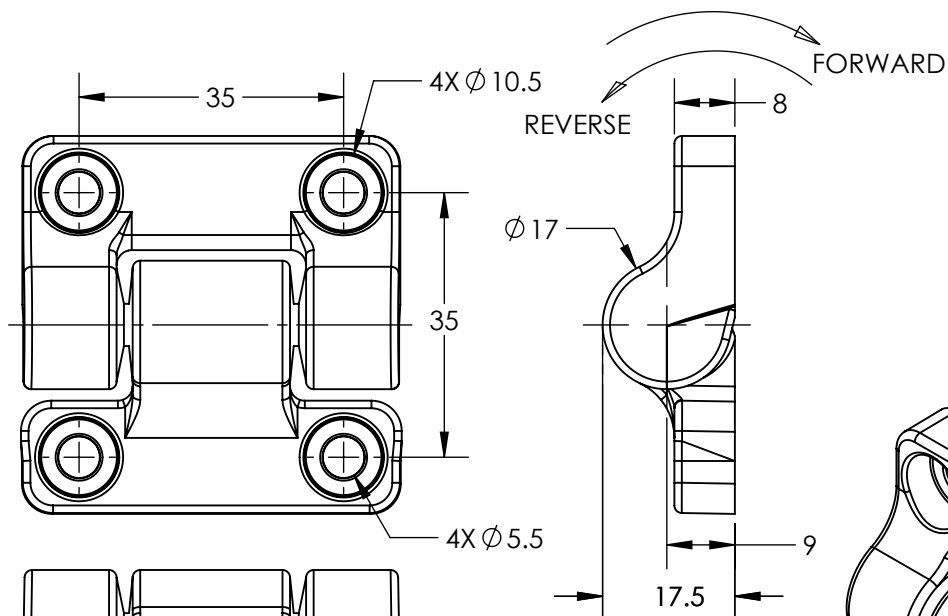
C

B


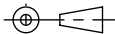
B

A

A



DETAIL A
SCALE 2 : 1

	ECO NO: 07461	PART LIFECYCLE: RELEASED	
	APPROVED BY: BOB WAHLSTEDT	DEVELOPMENT CYCLE: PRE-PRODUCTION	
	APPROVED DATE: 10SEP24	DESCRIPTION: SALES DRAWING	
	PROJECT NO: 101739		
REELL PRECISION MANUFACTURING 1259 WILLOW LAKE BOULEVARD SAINT PAUL, MINNESOTA 55110-5103, USA THIS PRINT IS THE CONFIDENTIAL PROPERTY OF REELL PRECISION MFG. INTERPRET PRINT PER ASME Y14.5M-2009	ENGINEER: TIM JENUM	PART NO: MH-10	
	DRAWN BY: TIM JENUM		
	THIRD ANGLE PROJECTION 	REV: 6	
DIMENSIONS: mm		SCALE: 1:1	DO NOT SCALE DRAWING
		SHEET 2 OF 2	