

REVISION HISTORY			
REV	DATE	ECN	DESCRIPTION
A	6/08/2009		APPROVED

LINEAR SPECIFICATIONS:

STROKE SPEC +1/-0

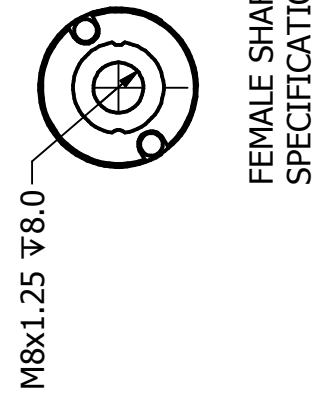
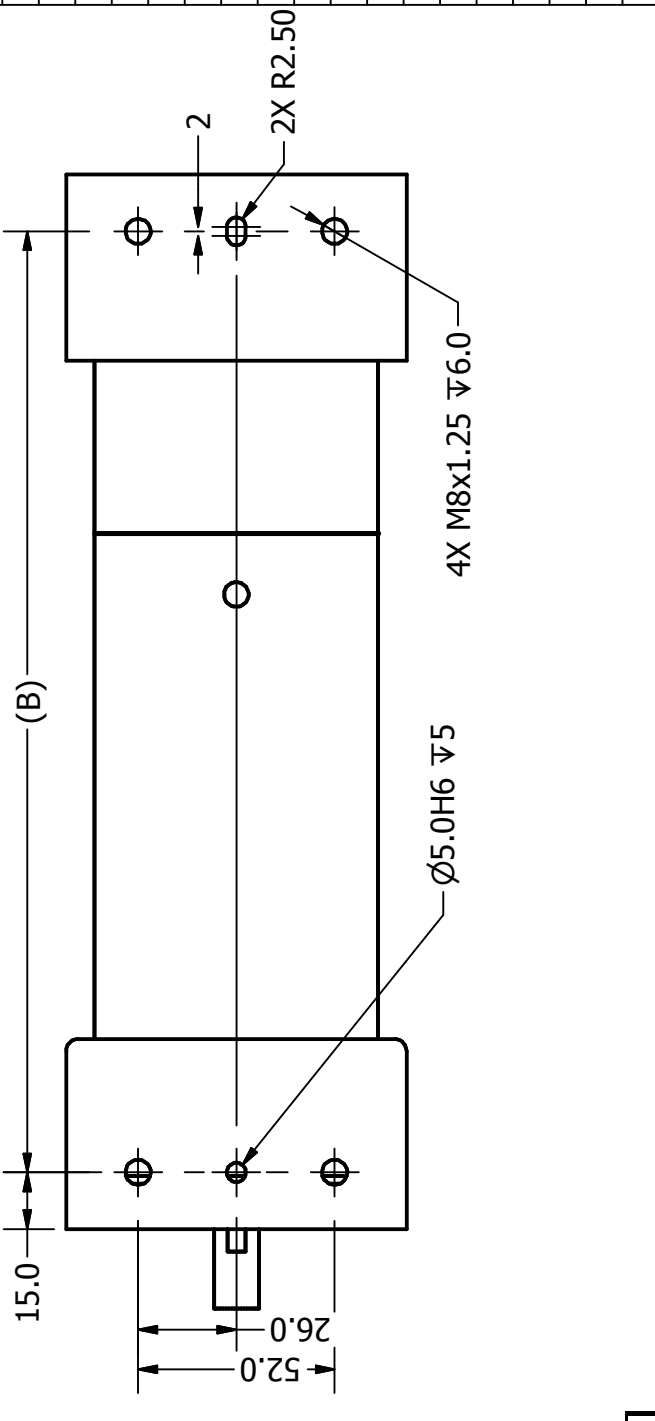
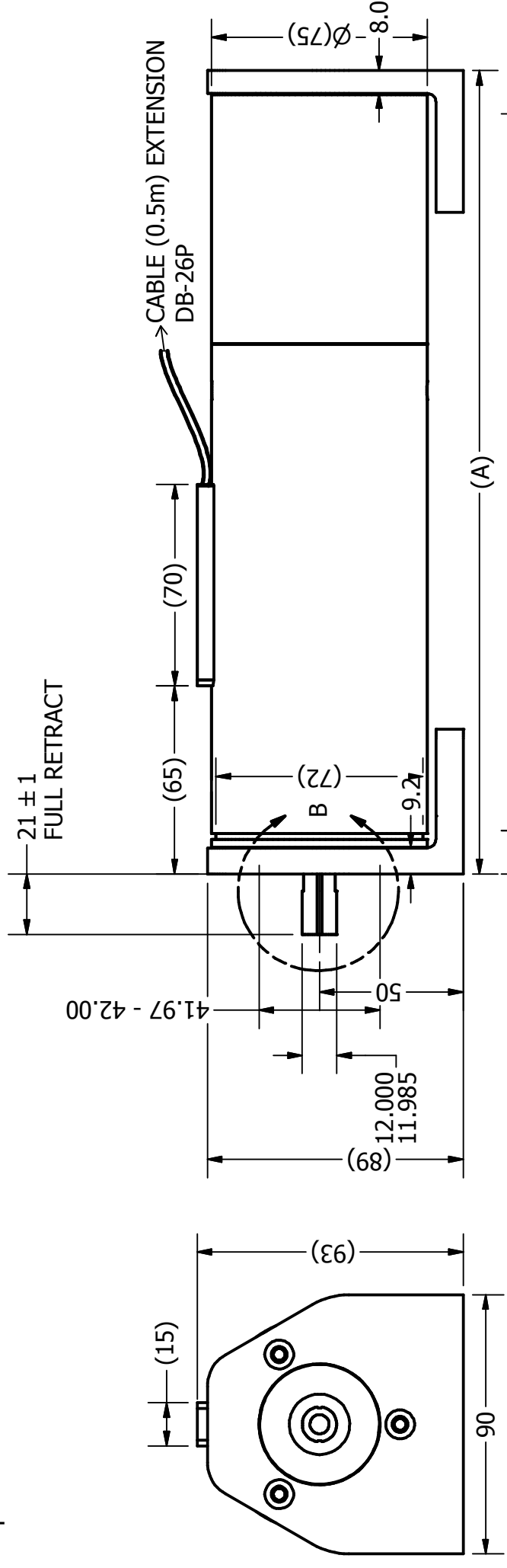
ENCODER RESOLUTION: 5.0, 1.0, 0.5, 0.1 μm

DIFFERENTIAL TTL

OPERATING TEMP: 0° TO 65°C

ALL DIMENSIONS ARE IN mm

PRELIMINARY SPECIFICATIONS



FEMALE SHAFT SPECIFICATIONS

DB 26P PINOUT	
#	FUNCTION
1	(AXIS 1) PH A+
2	(AXIS 1) PH B+
3	(AXIS 1) PH Z+
4	NC
5	NC
6	I/O RTN
7	NC
8	NC
9	NC
10	(AXIS 1) PH A-
11	(AXIS 1) PH B-
12	(AXIS 1) PH Z-
13	NC
14	NC
15	NC
16	NC
17	NC
18	NC
19	+5VDC
20	5V RTN
21	(AXIS 1) COIL +
22	(AXIS 1) COIL +
23	(AXIS 1) COIL -
24	(AXIS 1) COIL -
25	NC
26	NC

Descriptions	15-SINGLE	25-SINGLE	50-SINGLE	Units
Vdc	24	48	48	Volts
DC Resistance	17.8	35.6	35.6	Ohm±5%
Peak Force	40	62	53	40 N
F/A	31	48	44	32 N/Amp
Max. Current	2.0	2.0	2.0	2.0 Amp
Moving Mass	0.44	0.44	0.44	0.44 Kg
Total Mass	4.8	4.8	5.1	5.6 Kg
A	266	266	279	300 mm
B	236	236	249	270 mm

SMAC

TOLERANCES ARE:
 X. ± 0.50
 X.X ± 0.1
 X.XX ± 0.05
 X.XXX ±
 ANGULARITY ± 0.1°
 CONCENTRIC ± 0.01
 ROUNDNESS ± 0.05
 EDGE BREAK 0.02 MAX
 CHAMFER 0.03 MAX

DESIGNED BY: KARL STOCKS DATE: 4/23/2009 CHECKED BY: DATE:
 DRAWN BY: KARL STOCKS DATE: 6/26/2009 APPROVED BY: DATE:
 CONTRACT: CAL75

MATERIAL:
 MACHINE FINISH: 3.2/
 EXCEPT NOTED
 PROTECTIVE FINISH:
 SCALE: B
 DO NOT SCALE DWG
 SPEC. NUMBER:
 FILE NAME: CAL75-XXX-XX3B
 OUTLINE: idw

PART NAME: **CAL75-0XX-XX-3B**
 SHEET NUMBER: **1 OF 1**
 REVISION: **A**